

37-1266: Human Ephrin-A1 / EFNA1 Recombinant Protein (His & Fc Tag)(Discontinued)

Reactivity : Human

Alternative Name : B61 Protein, ECKLG Protein, EFL1 Protein, EFNA1 Protein, EPLG1 Protein, LERK-1 Protein, LERK1 Protein, TNFAIP4 Protein,

Description

Source : HEK293 Cells

EPH-related receptor tyrosine kinase ligand 1 (abbreviated as Ephrin-A1) also known as ligand of eph-related kinase 1 or EFNA1, is a member of the ephrin (EPH) family. The Eph family receptor interacting proteins (ephrins) are a family of proteins that serve as the ligands of the Eph receptor, which compose the largest known subfamily of receptor protein-tyrosine kinases (RTKs). Ephrin-A1/EFNA1 and its Eph family of receptor tyrosine kinases are expressed by cells of the SVZ. Ephrin subclasses are further distinguished by their mode of attachment to the plasma membrane: ephrin-A ligands bind EphA receptors and are anchored to the plasma membrane via a glycosylphosphatidylinositol (GPI) linkage, whereas ephrin-B ligands bind EphB receptors and are anchored via a transmembrane domain. An exception is the EphA4 receptor, which binds both subclasses of ephrins. Ephrin-A1 and one of its receptor EphA2 were expressed in xenograft endothelial cells and also tumor cells and play a role in human cancers, at least in part by influencing tumor neovascularization.

Product Info

Amount : A1 / EFNA1 Recombinant Protein (His & Fc Tag)(Discontinued) / 50 µg

Purification : > 85 % as determined by SDS-PAGE

Content : Formulation Lyophilized from sterile PBS, pH 7.4
Normally 5 % - 8 % trehalose, mannitol and 0.01% Tween80 are added as protectants before lyophilization.

Storage condition : Store it under sterile conditions at -20°C to -80°C. It is recommended that the protein be aliquoted for optimal storage. Avoid repeated freeze-thaw cycles.

Amino Acid : Met1-Ser182

Application Note

Measured by its binding ability in a functional ELISA . Immobilized mouse EphA2 at 2 Âµg/ml (100 ÂµL/well) can bind human EphrinA1 with a linear range of 0.8-20 ng/ml.

Endotoxin :< 1.0 EU per Âµg of the protein as determined by the LAL method.

Other pack size also available.

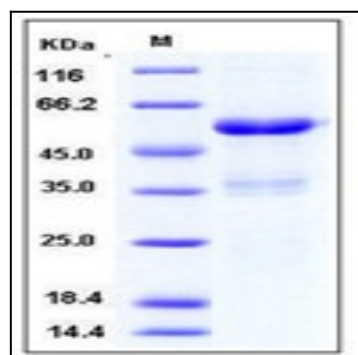


Fig 1: Human Ephrin-A1 / EFNA1 Recombinant Protein (His & Fc Tag)