

37-1287: Human BTLA Recombinant Protein (Fc Tag)(Discontinued)

Reactivity : Human
Alternative Name : BTLA1 Protein, CD272 Protein,

Description

Source : HEK293 Cells

BTLA is a inhibitory molecule which belongs to the Ig superfamily. It down-modulates immune responses. As such, reagents that regulate the binding of BTLA to its ligand or alter BTLA signaling have significant therapeutic promise. BTLA is crucial to understand the mechanism(s) of action of these antibodies before attempting clinical applications. BTLA is not expressed by naive T cells, but it is induced during activation and remains expressed on T helper type 1 (T(H)1) but not T(H)2 cells. BTLA is a third inhibitory receptor on T lymphocytes with similarities to cytotoxic T lymphocyte-associated antigen 4 (CTLA-4) and programmed death 1 (PD-1). Cancer Immunotherapy Co-inhibitory Immune Checkpoint Targets Immune Checkpoint Immune Checkpoint Targets Immunotherapy Targeted Therapy

Product Info

Amount : Human BTLA Recombinant Protein (Fc Tag)(Discontinued) / 100 µg
Purification : > 90 % as determined by SDS-PAGE
Content : Formulation Lyophilized from sterile PBS, pH 7.4. Normally 5 % - 8 % trehalose, mannitol and 0.01% Tween80 are added as protectants before lyophilization.
Storage condition : Store it under sterile conditions at -20°C to -80°C. It is recommended that the protein be aliquoted for optimal storage. Avoid repeated freeze-thaw cycles.
Amino Acid : Met1-Thr134

Application Note

1.Measured by its binding ability in a functional ELISA. 2.Immobilized human BTLA-Fc at 10⁵ µg/mL (100⁵ µL/well) can bind biotinylated mouse HVEM-Fch , the EC50 of biotinylated mouse HVEM-Fch is 6-70ng/mL.
Endotoxin :< 1.0 EU per µg of the protein as determined by the LAL method

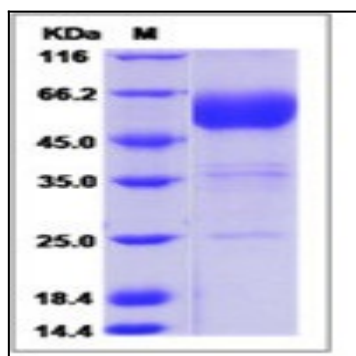


Fig 1: Human BTLA Recombinant Protein (Fc Tag)