

## 37-1328: Human LAG3 / CD223 / Lymphocyte activation gene 3 Recombinant Protein (Fc Tag)(Discontinued)

**Reactivity :** Human

**Alternative Name :** CD223 Protein, LAG-3 Protein,

### Description

#### Source : HEK293 Cells

LAG3, also known as CD223 and Lymphocyte activation gene 3, belongs to immunoglobulin (Ig) superfamily. LAG3 contains 4 extracellular Ig-like domains. The LAG3 gene contains 8 exons. It is selectively expressed in activated T and NK cells. LAG3 has a negative regulatory function in T cells. It also acts as a new marker of T cell induced B cell activation. As a soluble molecule, LAG3 activates antigen-presenting cells through MHC class II signalling, leading to increased antigen-specific T-cell responses in vivo. Cancer Immunotherapy Co-inhibitory Immune Checkpoint Targets Immune Checkpoint Immune Checkpoint Targets Immunotherapy Targeted Therapy

### Product Info

<b>Amount :</b>	Human LAG3 / CD223 / Lymphocyte activation gene 3 Recombinant Protein (Fc Tag)(Discontinued) / 200 µg
<b>Purification :</b>	> (3.0+91.0+3.1) % as determined by SDS-PAGE.
<b>Content :</b>	Formulation Lyophilized from sterile PBS, pH 7.4. Normally 5 % - 8 % trehalose, mannitol and 0.01% Tween80 are added as protectants before lyophilization.
<b>Storage condition :</b>	Store it under sterile conditions at -20°C to -80°C. It is recommended that the protein be aliquoted for optimal storage. Avoid repeated freeze-thaw cycles.
<b>Amino Acid :</b>	Met1-Leu450

### Application Note

Endotoxin :< 1.0 EU per 100 µg protein as determined by the LAL method.

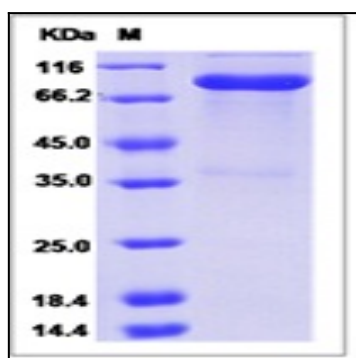


Fig 1: Human LAG3 / CD223 / Lymphocyte activation gene 3 Recombinant Protein (Fc Tag)