

## 37-1338: Mouse CCL20 / MIP-3 alpha Recombinant Protein (His Tag)(Discontinued)

**Reactivity :** Mouse

**Alternative Name :** Ckb4 Protein, Mouse; exodus-1 Protein, Mouse; LARC Protein, Mouse; MIP-3A Protein, Mouse; MIP-3[a] Protein, Mouse; MIP3A Protein, Mouse; Scya20 Protein, Mouse; ST38 Protein, Mouse

### Description

#### Source : Baculovirus-Insect Cells

Chemokine (C-C motif) ligand 2 (CCL2) or liver activation regulated chemokine (LARC) or Macrophage Inflammatory Protein-3 (MIP3A) is a small cytokine belonging to the CC chemokine family that attracts immature dendritic cells and memory T lymphocytes, both expressing CCR6. Depending on the cell type, this chemokine was found to be inducible by cytokines (IL-1beta) and by bacterial, viral, or plant products (including LPS, dsRNA, and PMA). MIP3A / CCL2 is Expressed predominantly in the liver, lymph nodes, appendix, peripheral blood lymphocytes, and fetal lung. Low levels of MIP3A / CCL2 has been seen in thymus, prostate, testis, small intestine and colon. As a chemotactic factor, MIP3A / CCL2 attracts lymphocytes and, slightly, neutrophils, but not monocytes. This chemokine may Inhibit proliferation of myeloid progenitors in colony formation assays and it may be involved in formation and function of the mucosal lymphoid tissues by attracting lymphocytes and dendritic cells towards epithelial cells. Its C-terminal processed forms have been shown to be equally chemotactically active for leukocytes. Chemokine CCL2 was shown to play a role in colorectal cancer (CRC) pathogenesis.

### Product Info

**Amount :** 3 alpha Recombinant Protein (His Tag)(Discontinued) / 50 µg

**Purification :** > 90 % as determined by SDS-PAGE

**Content :** Formulation Lyophilized from sterile 20mM Tris, 500mM NaCl, pH 7.4, 10% gly Normally 5 % - 8 % trehalose, mannitol and 0.01% Tween80 are added as protectants before lyophilization.

**Storage condition :** Store it under sterile conditions at -20°C to -80°C. It is recommended that the protein be aliquoted for optimal storage. Avoid repeated freeze-thaw cycles.

**Amino Acid :** Met1-Met97

### Application Note

Endotoxin :< 1.0 EU per µg of the protein as determined by the LAL method

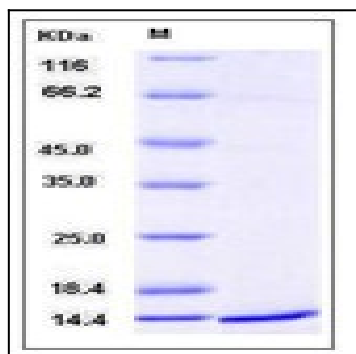


Fig 1: Mouse CCL20 / MIP-3 alpha Recombinant Protein (His Tag)