

## 37-1362: Mouse Ephrin-A4 / EFNA4 Recombinant Protein (Fc Tag)(Discontinued)

**Reactivity :** Mouse

**Alternative Name :** EFL-4 Protein, Mouse; Epl4 Protein, Mouse; LERK-4 Protein, Mouse

### Description

#### Source : HEK293 Cells

EPH-related receptor tyrosine kinase ligand 4 (Ephrin-A4) also known as EFNA4, is a member of the Ephrin family. The Eph family receptor interacting proteins (ephrins) are a family of proteins that serve as the ligands of the Eph receptor, which compose the largest known subfamily of receptor protein-tyrosine kinases (RTKs). Eph/ephrin interactions are implicated in axon guidance, neural crest cell migration, establishment of segmental boundaries, and formation of angiogenic capillary plexi. Ephrin subclasses are further distinguished by their mode of attachment to the plasma membrane: ephrin-A ligands bind EphA receptors and are anchored to the plasma membrane via a glycosylphosphatidylinositol (GPI) linkage, whereas ephrin-B ligands bind EphB receptors and are anchored via a transmembrane domain. An exception is the EphA4 receptor, which binds both subclasses of ephrins. Ephrin-A4/EFNA4 functions as a cell surface GPI-bound ligand for Eph receptor, a family of receptor tyrosine kinases which are crucial for migration, repulsion and adhesion during neuronal, vascular and epithelial development.

### Product Info

**Amount :** A4 / EFNA4 Recombinant Protein (Fc Tag)(Discontinued) / 200 µg

**Purification :** > 92 % as determined by SDS-PAGE

**Content :** Formulation Lyophilized from sterile PBS, pH 7.4  
Normally 5 % - 8 % trehalose, mannitol and 0.01% Tween80 are added as protectants before lyophilization.

**Storage condition :** Store it under sterile conditions at -20°C to -80°C. It is recommended that the protein be aliquoted for optimal storage. Avoid repeated freeze-thaw cycles.

**Amino Acid :** Met1-Gly176

### Application Note

Measured by its binding ability in a functional ELISA. 1. Immobilized human EphA7 at 2 Åµg/ml (100 ÅµL/well) can bind mouse EphrinA4 Fc Chimera with a linear range of 0.08-10 ng/ml . 2. Immobilized mouse EphA7 at 2 Åµg/ml (100 ÅµL/well) can bind mouse EphrinA4 Fc Chimera with a linear range of 0.08-10 ng/ml.

Endotoxin :< 1.0 EU per Åµg of the protein as determined by the LAL method

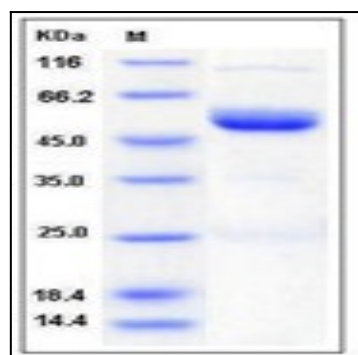


Fig 1: Mouse Ephrin-A4 / EFNA4 Recombinant Protein (Fc Tag)