

37-1369: Mouse EphA1 / EPH receptor A1 Recombinant Protein (His Tag)(Discontinued)

Reactivity : Mouse

Alternative Name : 5730453L17Rik Protein, Mouse; AL033318 Protein, Mouse; Eph Protein, Mouse; Esk Protein, Mouse

Description

Source : HEK293 Cells

EPHA1 or EPH receptor A1 belongs to the ephrin receptor subfamily of the protein-tyrosine kinase family. Receptors in the EPH subfamily typically have a single kinase domain and an extracellular region containing a Cys-rich domain and 2 fibronectin type III repeats. An important role of Eph receptors and their ligands ephrins is to mediate cell-contact-dependent repulsion. Eph receptors and ephrins also act at boundaries to channel neuronal growth cones along specific pathways, restrict the migration of neural crest cells, and via bidirectional signaling prevent intermingling between hindbrain segments. Eph receptors and ephrins can also trigger an adhesive response of endothelial cells and are required for the remodeling of blood vessels. Eph receptors and ephrins have emerged as key regulators of the repulsion and adhesion of cells that underlie the establishment, maintenance, and remodeling of patterns of cellular organization. The ephrins and Eph receptors are implicated as positional labels that may guide the development of neural topographic maps.

Product Info

Amount : Mouse EphA1 / EPH receptor A1 Recombinant Protein (His Tag)(Discontinued) / 200 µg

Purification : > 97 % as determined by SDS-PAGE

Content : Formulation Lyophilized from sterile PBS, pH 7.4

Normally 5 % - 8 % trehalose, mannitol and 0.01% Tween80 are added as protectants before lyophilization.

Storage condition : Store it under sterile conditions at -20°C to -80°C. It is recommended that the protein be aliquoted for optimal storage. Avoid repeated freeze-thaw cycles.

Amino Acid : Met1-Glu548

Application Note

Measured by its binding ability in a functional ELISA. Immobilized mouse EPHA1-His at 10 Åµg/ml (100 ÅµL/well) can bind mouse EFNA1-Fc , The EC50 of mouse EFNA1-Fc is 21.3-49.8 ng/ml.

Endotoxin :< 1.0 EU per Åµg of the protein as determined by the LAL method

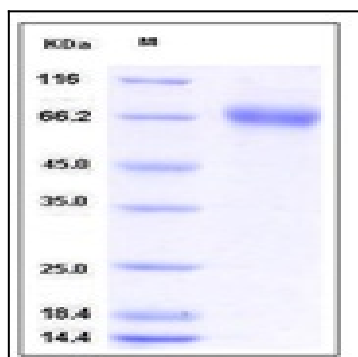


Fig 1: Mouse EphA1 / EPH receptor A1 Recombinant Protein (His Tag)