

## 37-1374: Mouse EphA3 Recombinant Protein (Fc Tag)(Discontinued)

**Reactivity :** Mouse

**Alternative Name :** AW492086 Protein, Mouse; Cek4 Protein, Mouse; End3 Protein, Mouse; ETK1 Protein, Mouse; Hek Protein, Mouse; Hek4 Protein, Mouse; Mek4 Protein, Mouse; Tyro4 Protein, Mouse

### Description

#### Source : HEK293 Cells

EPHA3 gene belongs to the ephrin receptor subfamily of the protein-tyrosine kinase family. EPH and EPH-related receptors have been implicated in mediating developmental events, particularly in the nervous system. The ephrin receptors are divided into 2 groups based on the similarity of their extracellular domain sequences and their affinities for binding ephrin-A and ephrin-B ligands. EPHA3 gene encodes a protein that binds ephrin-A ligands. EPHA3 is involved in the retinotectal mapping of neurons. It may also control the segregation but not the guidance of motor and sensory axons during neuromuscular circuit development. Cancer Immunotherapy Immune Checkpoint Immunotherapy Targeted Therapy

### Product Info

**Amount :** Mouse EphA3 Recombinant Protein (Fc Tag)(Discontinued) / 500 µg

**Purification :** > 90 % as determined by SDS-PAGE

**Content :** Formulation Lyophilized from sterile PBS, pH 7.4.  
Normally 5 % - 8 % trehalose, mannitol and 0.01% Tween80 are added as protectants before lyophilization.

**Storage condition :** Store it under sterile conditions at -20°C to -80°C. It is recommended that the protein be aliquoted for optimal storage. Avoid repeated freeze-thaw cycles.

**Amino Acid :** Met1-His541

### Application Note

Measured by its binding ability in a functional ELISA. Immobilized mouse EFNA5-His at 10 Åµg/ml (100 ÅµL/well) can bind mouse EPHA3-Fc, The EC50 of rat mouse EPHA3-Fc is 12.3-28.9 ng/ml.

Endotoxin : < 1.0 EU per Åµg of the protein as determined by the LAL method

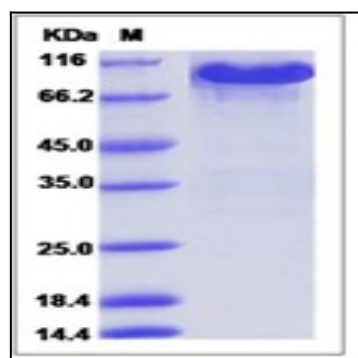


Fig 1: Mouse EphA3 Recombinant Protein (Fc Tag)