

37-1388: SARS coronavirus Plpro / papain-like protease(Discontinued)

Alternative Name : none

Description

Source : E. coli

The methanol extract of *T. terrestris* fruits showed potent inhibition against the papain-like protease (PLpro), an essential proteolytic enzyme for protection to pathogenic virus and bacteria. *Tribulus terrestris* fruits are well known for their usage in pharmaceutical preparations and food supplements. The most active PLpro inhibitors (1-6) were proven to be present in the native fruits in high quantities by HPLC chromatogram and liquid chromatography with diode array detection and electrospray ionization mass spectrometry (LC-DAD-ESI/MS).

Product Info

Amount :	like protease(Discontinued) / 20 µg
Purification :	> 90 % as determined by SDS-PAGE.
Content :	Formulation Lyophilized from sterile 50 mM Tris, 0.1 % Tween, pH 9.0. Normally 5 % - 8 % trehalose, mannitol and 0.01% Tween80 are added as protectants before lyophilization.
Storage condition :	Store it under sterile conditions at -20°C to -80°C. It is recommended that the protein be aliquoted for optimal storage. Avoid repeated freeze-thaw cycles.
Amino Acid :	Glu1541-Tyr1859

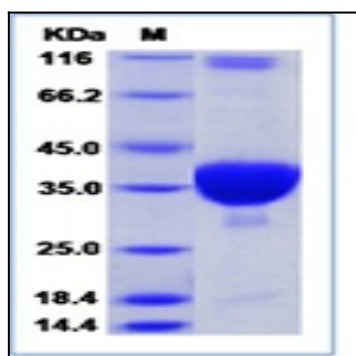


Fig 1: SARS coronavirus (SARS-CoV) (strain WH20) Plpro / papain-like protease (His Tag)