

36-2008: Anti-Occludin (OCLN) (Tight Junctions Marker) Monoclonal Antibody (Clone:OCLN/2183)

Clonality :	Monoclonal
Clone Name :	OCLN/2183
Application :	IHC
Reactivity :	Human
Gene :	OCLN
Gene ID :	100506658
Uniprot ID :	Q16625
Alternative Name :	BLCPMG; Occludin; OCLN; Phosphatase 1 regulatory subunit 115; PPP1R115; PTORCH1; Tight junction protein occludin
Isotype :	Mouse IgG1, kappa
Immunogen Information :	Recombinant human Occludin fragment around aa 282-415 (Exact sequence is proprietary)

Description

Occludin is a tetraspan integral membrane protein in epithelial and endothelial tight junction (TJ) structures that can contain two extracellular loops. The protein exists in a variety of phosphorylated forms. Phosphorylation is involved in regulating both the localization and the function of Occludin. Expression of Occludin is upregulated by polyunsaturated fatty acids, increasing trans-endothelial cell resistance and reducing cellular permeability to large molecules. The level of Occludin varies greatly depending on tissue; in brain tissue, Occludin is highly expressed at cell-cell contact sites. Non-neural tissues show lower expression and discontinuous distribution. Up-regulation of epithelial Occludin may play a role in enhancing paracellular permeability and be related to the damage to the tight junction.

Product Info

Amount :	20 µg / 100 µg
Content :	200µg/ml of Ab Purified from Bioreactor Concentrate by Protein A/G. Prepared in 10mM PBS with 0.05% BSA & 0.05% azide. Also available WITHOUT BSA & azide at 1.0mg/ml.
Storage condition :	Antibody with azide - store at 2 to 8°C. Antibody without azide - store at -20 to -80°C. Antibody is stable for 24 months.

Application Note

Immunohistochemistry (Formalin-fixed) (1-2ug/ml for 30 minutes at RT)(Staining of formalin-fixed tissues requires heating tissue sections in 10mM Tris with 1mM EDTA, pH 9.0, for 45 min at 95°C followed by cooling at RT for 20 minutes);

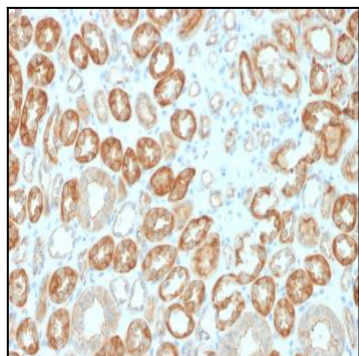


Fig.1: Formalin-fixed, paraffin-embedded human Kidney stained with Occludin Mouse Monoclonal Antibody (OCLN/2183).

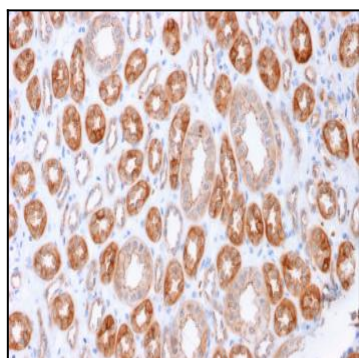


Fig. 2: Formalin-fixed, paraffin-embedded human Kidney stained with Occludin Mouse Monoclonal Antibody (OCLN/2183).

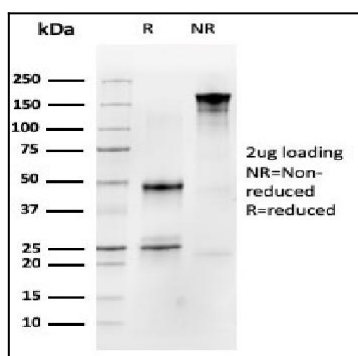


Fig. 3: SDS-PAGE Analysis Purified Occludin Mouse Monoclonal Antibody (OCLN/2183). Confirmation of Integrity and Purity of Antibody.