

36-2013: Anti-Ksp-Cadherin (Kidney-Specific Cadherin) / CDH16 Polyclonal Antibody

Clonality :	Polyclonal
Application :	IHC
Reactivity :	Human, Mouse, Rat
Gene :	CDH16
Gene ID :	1014
Uniprot ID :	O75309
Alternative Name :	Cadherin-16 (CDH16); Kidney-specific cadherin; Ksp-cadherin antibody
Isotype :	Rabbit IgG
Immunogen Information :	Recombinant human CDH16 protein

Description

This antibody recognizes a protein of 130kDa, identified as Ksp-cadherin. Cadherins form a superfamily of related glycoproteins that mediate calcium-dependent cell adhesion and transmit signals from the extracellular matrix to the cytoplasm. Cadherins have been implicated in embryogenesis, tissue morphogenesis, tissue structure maintenance, cell polarization, neoplastic invasiveness and metastasis, and membrane transport. It is suggested that Ksp-cadherin is a marker for terminal differentiation of the basolateral membranes of renal tubular epithelial cells. Within the kidney, Ksp-Cadherin is found exclusively in the basolateral membrane of renal tubular epithelial cells and collecting duct cells, and not in glomeruli, renal interstitial cells, or blood vessels. Ksp-Cadherin has been suggested to distinguish Chromophobe Renal-Cell Carcinoma from Oncocytoma.

Product Info

Amount :	20 µg / 100 µg
Content :	200µg/ml of Ab Purified by Protein A. Prepared in 10mM PBS with 0.05% BSA & 0.05% azide. Also available WITHOUT BSA & azide at 1.0mg/ml.
Storage condition :	Antibody with azide - store at 2 to 8°C. Antibody without azide - store at -20 to -80°C. Antibody is stable for 24 months.

Application Note

Immunohistochemistry (Formalin-fixed) (1-2ug/ml for 30 minutes at RT),(Staining of formalin-fixed tissues requires heating tissue sections in 10mM Tris with 1mM EDTA, pH 9.0, for 45 min at 95°C followed by cooling at RT for 20 minutes);

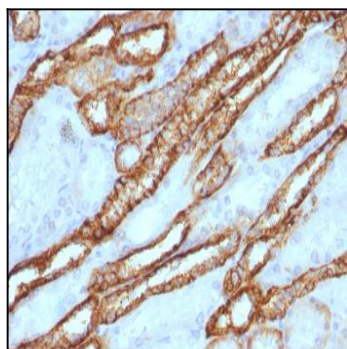


Fig.1: Formalin-fixed, paraffin-embedded human Renal Cell Carcinoma stained with KSP-Cadherin Rabbit Polyclonal Antibody.