

### 36-2021: Anti-Mesothelin (Mesothelial Marker) Monoclonal Antibody (Clone: SPM143)

<b>Clonality :</b>	Monoclonal
<b>Clone Name :</b>	SPM143
<b>Application :</b>	IHC
<b>Reactivity :</b>	Human
<b>Gene :</b>	MSLN
<b>Gene ID :</b>	10232
<b>Uniprot ID :</b>	Q13421
<b>Alternative Name :</b>	CAK1; Megakaryocyte potentiating factor; Mesothelin; MSLN; SMR; SMRP
<b>Isotype :</b>	Mouse IgG2b, kappa
<b>Immunogen Information :</b>	Recombinant fragment (around aa 273-407) of human Mesothelin (MSLN) protein (exact sequence is proprietary)

#### Description

Mesothelin is a 40kDa glycosyl-phosphatidylinositol-anchored glycoprotein cleaved from a 69kDa precursor protein. Mesothelin immunoreactivity is high in cancers of the ovary (serous papillary, endometrioid and undifferentiated) and pancreas, with less frequent staining seen in adenocarcinomas of the endometrium, lung and stomach/esophagus. Mesothelin is one of the most sensitive markers for mesothelioma.

#### Product Info

<b>Amount :</b>	20 µg / 100 µg
<b>Content :</b>	200µg/ml of Ab Purified from Bioreactor Concentrate by Protein A/G. Prepared in 10mM PBS with 0.05% BSA & 0.05% azide. Also available WITHOUT BSA & azide at 1.0mg/ml.
<b>Storage condition :</b>	Antibody with azide - store at 2 to 8°C. Antibody without azide - store at -20 to -80°C. Antibody is stable for 24 months.

#### Application Note

Immunohistochemistry (Formalin-fixed) (1-2ug/ml for 30 minutes at RT)(Staining of formalin-fixed tissues requires heating tissue sections in 10mM Tris with 1mM EDTA, pH 9.0, for 45 min at 95°C followed by cooling at RT for 20 minutes);

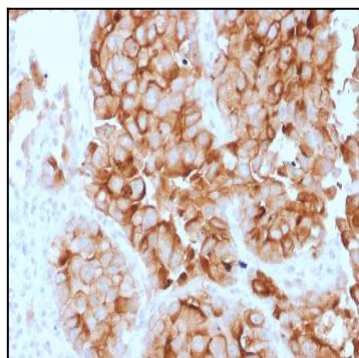


Fig.1: Formalin-fixed, paraffin-embedded human Lung Mesothelioma stained with Mesothelin Mouse Monoclonal Antibody (SPM143).

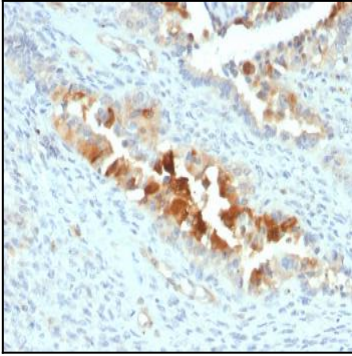


Fig. 2: Formalin-fixed, paraffin-embedded human Endometrial Carcinoma stained with Mesothelin Mouse Monoclonal Antibody (SPM143).