

## 36-2025: Anti-p21WAF1 (Tumor Suppressor Protein) Monoclonal Antibody (Clone: CIP1/2489R)

<b>Clonality :</b>	Monoclonal
<b>Clone Name :</b>	CIP1/2489R
<b>Application :</b>	IHC
<b>Reactivity :</b>	Human
<b>Gene :</b>	CDKN1A
<b>Gene ID :</b>	1026
<b>Uniprot ID :</b>	P38936
<b>Alternative Name :</b>	Activating Fragment 1, CAP20, CDK-interacting protein 1, CDKI, CDKN1, CDKN1A, CIP1, Cyclin-dependent kinase inhibitor 1A (p21, Cip1), DNA Synthesis Inhibitor, MDA6, Melanoma Differentiation Associated Protein 6, p21Cip1/Waf1, PIC1, SDI1, SLC12A9, Wild type p53 activated fragment 1 (WAF1)
<b>Isotype :</b>	Rabbit IgG
<b>Immunogen Information :</b>	Recombinant full-length human CDKN1A protein

### Description

This MAb recognizes a 21kDa protein, identified as the p21WAF1 tumor suppressor protein. This MAb is highly specific to p21 and shows no cross-reaction with other closely related mitotic inhibitors. p21WAF1 is a specific inhibitor of cdk's and a tumor suppressor involved in the pathogenesis of a variety of malignancies. The expression of this gene acts as an inhibitor of the cell cycle during G1 phase and is tightly controlled by the tumor suppressor protein p53. Its expression is induced by the wild type, but not mutant, p53 suppressor protein. Normal cells generally display a rather intense nuclear p21 expression. Loss of p21 expression has been reported in many carcinomas (gastric carcinoma, non-small cell lung carcinoma, thyroid carcinoma).

### Product Info

<b>Amount :</b>	20 µg / 100 µg
<b>Content :</b>	200µg/ml of Ab Purified from Bioreactor Concentrate by Protein A/G. Prepared in 10mM PBS with 0.05% BSA & 0.05% azide. Also available WITHOUT BSA & azide at 1.0mg/ml.
<b>Storage condition :</b>	Antibody with azide - store at 2 to 8°C. Antibody without azide - store at -20 to -80°C. Antibody is stable for 24 months.

### Application Note

Immunohistochemistry (Formalin-fixed) (1-2ug/ml for 30 minutes at RT)(Staining of formalin-fixed tissues requires heating tissue sections in 10mM Tris with 1mM EDTA, pH 9.0, for 45 min at 95&degC followed by cooling at RT for 20 minutes);

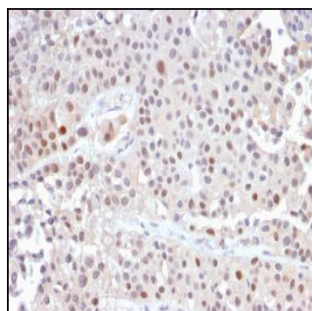


Fig.1: Formalin-fixed, paraffin-embedded human Urothelial Carcinoma stained with p21 Rabbit Recombinant Monoclonal Antibody (CIP1/2489R).

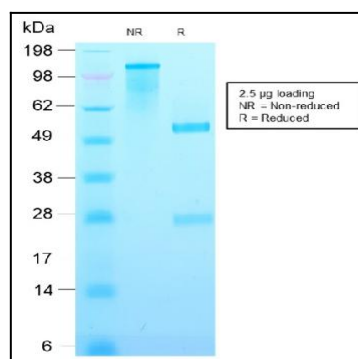


Fig. 2: SDS-PAGE Analysis Purified p21 Rabbit Recombinant Monoclonal Antibody (CIP1/2489R). Confirmation of Purity and Integrity of Antibody.