

36-2054: Anti-CFTR (Cystic Fibrosis Transmembrane Conductance Regulator) Monoclonal Antibody (Clone: CFTR/1775R)

Clonality :	Monoclonal
Clone Name :	CFTR/1775R
Application :	IHC
Reactivity :	Human
Gene :	CFTR
Gene ID :	1080
Uniprot ID :	P13569
Alternative Name :	ABC35; ATP Binding Cassette Superfamily C Member 7 (ABCC7); cAMP-dependent chloride channel; CFTR; CFTR/MRP; Channel conductance-controlling ATPase; Cystic Fibrosis Transmembrane Conductance Regulator; MRP7; TNR CFTR
Isotype :	Rabbit IgG
Immunogen Information :	Recombinant fragment (around aa 258-385) of human CFTR protein (exact sequence is proprietary)

Description

Recognizes a protein of 165-170kDa, identified as cystic fibrosis transmembrane conductance regulator (CFTR). CFTR is composed of two membrane-spanning domains (MSD), two nucleotide-binding domains (NBD), and an R domain. It is structurally similar to multidrug resistance (Mdr1) protein and both are members of the superfamily of ATP-binding cassette (ABC) transporters, also known as traffic ATPases, which are implicated in the movement of various substrates. The CFTR protein is a small conductance adenosine 3',5'-cyclic monophosphate (cAMP)-activated chloride ion channel found in the apical membranes of epithelia within the pancreas, airway, intestine, bile duct, sweat gland, and male genital ducts. CFTR is a valuable marker of human pancreatic duct cell development and differentiation.

Product Info

Amount :	20 µg / 100 µg
Content :	200µg/ml of Ab Purified by Protein A. Prepared in 10mM PBS with 0.05% BSA & 0.05% azide. Also available WITHOUT BSA & azide at 1.0mg/ml.
Storage condition :	Antibody with azide - store at 2 to 8°C. Antibody without azide - store at -20 to -80°C. Antibody is stable for 24 months.

Application Note

Immunohistochemistry (Formalin-fixed) (1-2ug/ml for 30 minutes at RT)(Staining of formalin-fixed tissues is enhanced by heating tissue sections in 10mM Tris with 1mM EDTA, pH 9.0 for 45 min at 95°C followed by cooling at RT for 20 minutes)

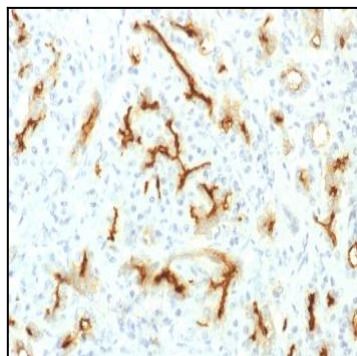


Fig.1: Formalin-fixed, paraffin-embedded human Pancreas stained with CFTR Rabbit Recombinant Monoclonal Antibody (CFTR/1775R).

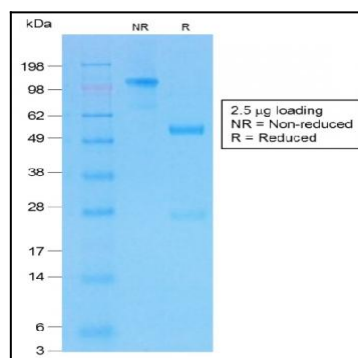


Fig. 2: SDS-PAGE Analysis of Purified CFTR Rabbit Recombinant Monoclonal Antibody (CFTR/1775R).