

### 36-2062: Anti-MALT1 (MALT-Lymphoma Marker) Monoclonal Antibody (Clone: rMT1/410)

<b>Clonality :</b>	Monoclonal
<b>Clone Name :</b>	rMT1/410
<b>Application :</b>	IHC
<b>Reactivity :</b>	Human
<b>Gene :</b>	MALT1
<b>Gene ID :</b>	10892
<b>Uniprot ID :</b>	Q9UDY8
<b>Alternative Name :</b>	Caspase-like protein, MALT lymphoma-associated translocation, MLT1, Mucosa-associated lymphoid tissue lymphoma translocation protein 1, Paracaspase
<b>Isotype :</b>	Mouse IgG1, kappa
<b>Immunogen Information :</b>	Recombinant fragment (around aa701-808) of human MALT1 protein (exact sequence is proprietary)

#### Description

Mucosa associated lymphoid tissue lymphoma translocation gene 1 (MALT1) is found in extranodal low-grade B cell lymphomas. MALT1 encodes two Ig-like C2-type domains and fuses with an API2 gene, which is highly expressed in adult lymphoid tissue. The translocation of this MALT1 gene, which maps to human chromosome 18q21, and the apoptosis-inhibiting API2 gene results in an increased development of MALT lymphomas and apoptosis inhibition. Sites at which this API2-MALT1 (11;18)(q21;q21) translocation commonly occurs are within human lung and kidney tissue. MALT lymphoma expresses nuclear Bcl10, which mediates the oligomerization and activation of a MALT1 caspase-like domain. MALT1 mRNA is found in pre-B cells, mature B cells and plasma cells.

#### Product Info

<b>Amount :</b>	20 µg / 100 µg
<b>Content :</b>	200µg/ml of Ab Purified from Bioreactor Concentrate by Protein A/G. Prepared in 10mM PBS with 0.05% BSA & 0.05% azide. Also available WITHOUT BSA & azide at 1.0mg/ml.
<b>Storage condition :</b>	Antibody with azide - store at 2 to 8°C. Antibody without azide - store at -20 to -80°C. Antibody is stable for 24 months.

#### Application Note

Immunohistochemistry (Formalin-fixed) (1-2ug/ml for 30 minutes at RT),(Staining of formalin-fixed tissues requires heating tissue sections in 10mM Tris with 1mM EDTA, pH 9.0, for 45 min at 95&degC followed by cooling at RT for 20 minutes);

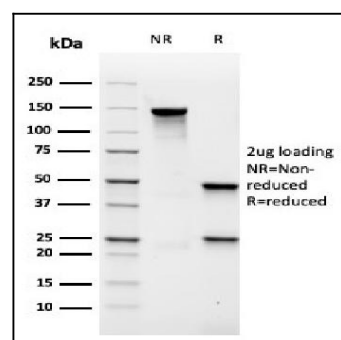


Fig.1: SDS-PAGE Analysis Purified MALT1 Recombinant Mouse Monoclonal Antibody (rMT1/410). Confirmation of Purity and Integrity of Antibody.

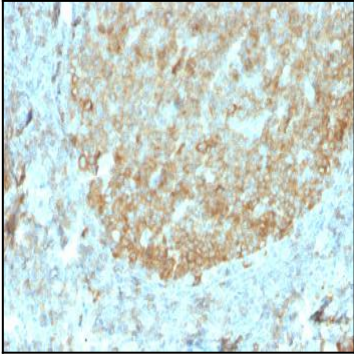


Fig. 2: Formalin-fixed, paraffin-embedded human Tonsil stained with MALT1 Recombinant Mouse Monoclonal Antibody (rMT1/410).