

## 36-2069: Anti-CHD4 Monoclonal Antibody (Clone: 3F2/4)

<b>Clonality :</b>	Monoclonal
<b>Clone Name :</b>	3F2/4
<b>Application :</b>	ELISA, WB, FACS, IF, IHC
<b>Reactivity :</b>	Human, Mouse
<b>Gene :</b>	CHD4
<b>Gene ID :</b>	1108
<b>Uniprot ID :</b>	Q14839
<b>Alternative Name :</b>	ATP dependent helicase CHD4; Chromodomain helicase DNA binding protein 4; Mi 2 autoantigen 218 kDa protein; Mi 2b; Mi2 beta
<b>Isotype :</b>	Mouse IgG2a, kappa
<b>Immunogen Information :</b>	Synthetic peptide (N- and C- terminal peptides were used for immunisation: 1. ASGLGSPSPCSAGSEEEDM & 2. CSRLANRAPEPPPQVAAQQQ) - which peptide the antibody recognises has not been tested.

### Description

CHD4/Mi-2b is a component of the nucleosome remodeling and deacetylase (NuRD) complex which is a multi-subunit protein complex containing both histone deacetylase and nucleosome-dependent ATPase subunits. Current models predict that this complex function primarily in transcriptional repression. Accumulating evidence indicates that NuRD may regulate the transcription of specific genes by interacting with specific transcriptional factors. In addition, the NuRD complex may also participate in genome-wide transcriptional regulation through an association with histone tails.

### Product Info

<b>Amount :</b>	20 µg / 100 µg
<b>Content :</b>	200µg/ml of Ab Purified from Bioreactor Concentrate by Protein A/G. Prepared in 10mM PBS with 0.05% BSA & 0.05% azide. Also available WITHOUT BSA & azide at 1.0mg/ml.
<b>Storage condition :</b>	Antibody with azide - store at 2 to 8°C. Antibody without azide - store at -20 to -80°C. Antibody is stable for 24 months.

### Application Note

ELISA (For coating, order antibody without BSA); Western Blot (1-2ug/ml) Flow Cytometry (1-2ug/million cells); Immunofluorescence (1-2ug/ml); Immunohistochemistry (Formalin-fixed) (1-2ug/ml for 30 minutes at RT) (Staining of formalin-fixed tissues requires heating tissue sections in 10mM Tris with 1mM EDTA, pH 9.0, for 45 min at 95°C followed by cooling at RT for 20 minutes);

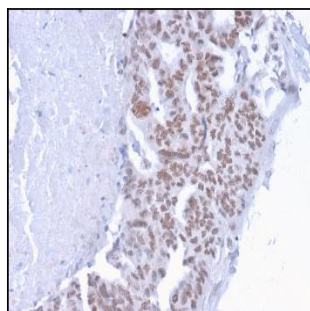


Fig.1: Formalin-fixed, paraffin-embedded human Breast Carcinoma stained with CHD4 Mouse Monoclonal Antibody (3F2/4).

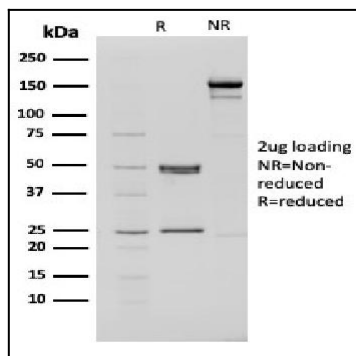


Fig. 2: SDS-PAGE Analysis Purified CHD4 Mouse Monoclonal Antibody (3F2/4). Confirmation of Purity and Integrity of Antibody.

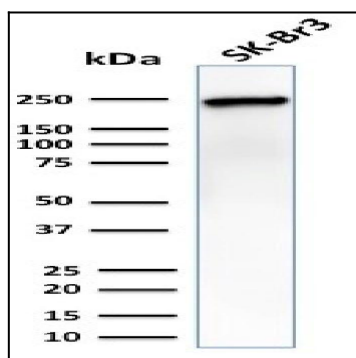


Fig. 3: Western Blot Analysis of SK-Br3 cell lysate using CHD4 Mouse Monoclonal Antibody (3F2/4).

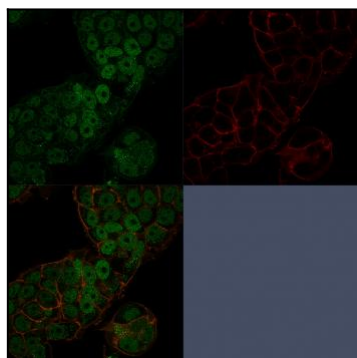


Fig. 4: Confocal immunofluorescence image of MCF-7 cells using CHD4 Mouse Monoclonal Antibody (3F2/4) stained in Green (CF488) and Phalloidin is used to label the membranes.