

## 36-2088: Anti-Topoisomerase (DNA) I, Mitochondrial (TOP1MT) Monoclonal Antibody (Clone: TOP1MT/568)

<b>Clonality :</b>	Monoclonal
<b>Clone Name :</b>	TOP1MT/568
<b>Application :</b>	IHC
<b>Reactivity :</b>	Human
<b>Gene :</b>	TOP1MT
<b>Gene ID :</b>	116447
<b>Uniprot ID :</b>	Q969P6
<b>Alternative Name :</b>	DNA topoisomerase I; TOP1MT; Topoisomerase I mitochondrial; Type IB Topoisomerase
<b>Isotype :</b>	Mouse IgG1, kappa
<b>Immunogen Information :</b>	Recombinant full-length human TOP1MT protein

### Description

DNA topoisomerases are nuclear enzymes that regulate the topological structure of DNA in eukaryotic cells by transiently breaking and rejoining DNA strands. Due to their roles in DNA replication, recombination, and transcription, DNA topoisomerases have been identified as targets of numerous anticancer drugs. Mitochondrial Topo I (DNA topoisomerase I, mitochondrial) is a 601 amino acid protein that primarily acts to relieve DNA strain that may occur during duplication of mitochondrial DNA. As a type IB topoisomerase, mitochondrial Topo I requires a divalent metal, either, calcium or magnesium, as well as an alkaline pH for optimal activity.

### Product Info

<b>Amount :</b>	20 µg / 100 µg
<b>Content :</b>	200µg/ml of Ab Purified from Bioreactor Concentrate by Protein A/G. Prepared in 10mM PBS with 0.05% BSA & 0.05% azide. Also available WITHOUT BSA & azide at 1.0mg/ml.
<b>Storage condition :</b>	Antibody with azide - store at 2 to 8°C. Antibody without azide - store at -20 to -80°C. Antibody is stable for 24 months.

### Application Note

Immunohistochemistry (Formalin-fixed) (1-2ug/ml for 30 minutes at RT)(Staining of formalin-fixed tissues requires heating tissue sections in 10mM Tris with 1mM EDTA, pH 9.0, for 45 min at 95°C followed by cooling at RT for 20 minutes);

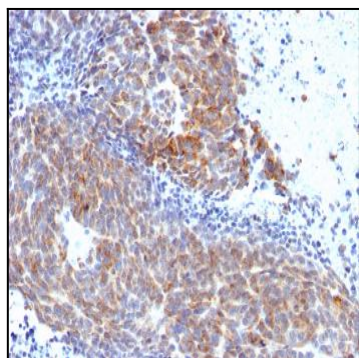


Fig.1: Formalin-fixed, paraffin-embedded human Melanoma stained with Topo I, MT Mouse Monoclonal Antibody (TOP1MT/568).

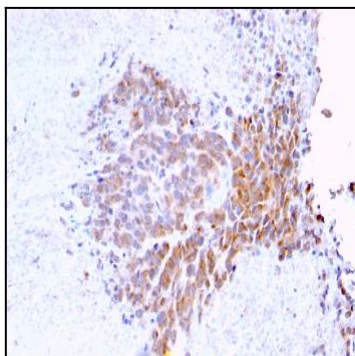


Fig. 2: Formalin-fixed, paraffin-embedded human Melanoma stained with Topo I, MT Mouse Monoclonal Antibody (TOP1MT/568)

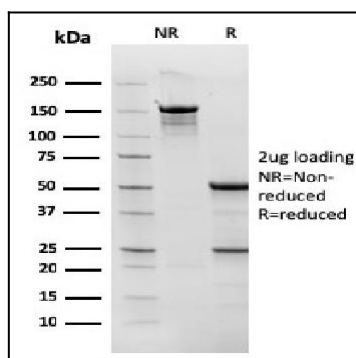


Fig. 3: SDS-PAGE Analysis Purified Topo I, MT Mouse Monoclonal Antibody (TOP1MT/568). Confirmation of Purity and Integrity of Antibody.