

36-2095: Anti-Clathrin, Heavy Chain Monoclonal Antibody (Clone: CHC/1432)

Clonality :	Monoclonal
Clone Name :	CHC/1432
Application :	IF
Reactivity :	Mouse, Rat, Human
Gene :	CLTC
Gene ID :	1213
Uniprot ID :	P53675; Q00610
Alternative Name :	Clathrin heavy chain; Clathrin heavy chain 1; Clathrin heavy chain 2; Clathrin heavy chain on chromosome 17 (CHC17 or CHC-17); CLH22; CLTC; CLTCL; CLTCL1; CLTCL2; CLTD
Isotype :	Mouse IgG1, kappa
Immunogen Information :	Recombinant full-length human Clathrin Heavy Chain protein

Description

Recognizes protein of 192kDa, which is identified as Clathrin Heavy Chain. Clathrin is composed of three heavy chains and three light chains, which associate non-covalently to form a triskelion structure. Clathrin heavy chain (HC) is composed of a terminal globular domain, a distal segment and a proximal segment containing a light chain-binding site. The proximal segment of the Clathrin HC protein is essential for interactions between Clathrin heavy chains and light chains, which result in the formation of the triskelion structure.

Product Info

Amount :	20 µg / 100 µg
Content :	200µg/ml of Ab Purified from Bioreactor Concentrate by Protein A/G. Prepared in 10mM PBS with 0.05% BSA & 0.05% azide. Also available WITHOUT BSA & azide at 1.0mg/ml.
Storage condition :	Antibody with azide - store at 2 to 8°C. Antibody without azide - store at -20 to -80°C. Antibody is stable for 24 months.

Application Note

Immunofluorescence (1-2ug/ml);

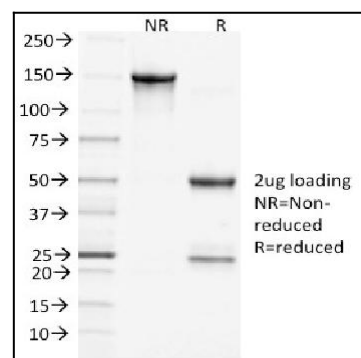


Fig.1: SDS-PAGE Analysis Purified Clathrin, HC Monoclonal Antibody (CHC/1432). Confirmation of Purity and Integrity of Antibody.

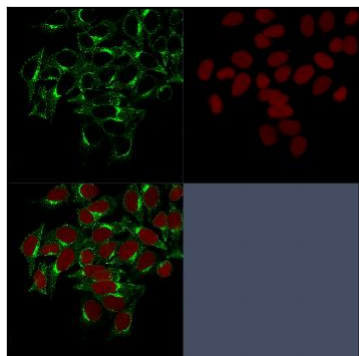


Fig. 2: Confocal Immunofluorescence image of HeLa cells stained with Clathrin, HC Monoclonal Antibody (CHC/1432) followed by Goat anti-Mouse CF488 (green). Reddot is used to label the nuclei red.