

36-2113: Anti-CD21 (Mature B-Cell & Follicular Dendritic Cell Marker) Monoclonal Antibody(Clone: rCR2/1952)

Clonality :	Monoclonal
Clone Name :	rCR2/1952
Application :	IHC
Reactivity :	Human
Gene :	CR2
Gene ID :	1380
Uniprot ID :	P20023
Alternative Name :	CD21; Complement C3d receptor (C3DR); Complement Receptor type 2 (CR2); CVID7; EBV receptor; EBV-R; Epstein-Barr virus receptor; EVBR; SLEB9
Isotype :	Mouse IgG1, kappa
Immunogen Information :	Recombinant fragment (around aa 44-196) of human CR2 (CD21) protein (exact sequence is proprietary)

Description

Recognizes a protein of 140kDa, which is identified as the complement receptor 2(CR2)/CD21. This protein is expressed strongly on mature B cells, follicular dendritic cells and weakly on immature thymocytes and T lymphocytes. In B-cell ontogeny, CD21 appears after the pre-B-stage, is maintained during peripheral B-cell development and is lost upon terminal differentiation into plasma cells. CD21 expression is also gradually lost after stimulation of B cells in vitro. CD21 functions as receptor for C3d, C3dg and iC3b Complement components, for EBV and for IFNalpha. CD21 binds to CD23 and associates with CD19, CD81 and Leu13 to form a large signal-transduction complex involved in B cell activation.

Product Info

Amount :	20 µg / 100 µg
Content :	200 µg/ml of Ab Purified from Bioreactor Concentrate by Protein A/G. Prepared in 10mM PBS with 0.05% BSA & 0.05% azide. Also available WITHOUT BSA & azide at 1.0mg/ml.
Storage condition :	Antibody with azide - store at 2 to 8°C. Antibody without azide - store at -20 to -80°C. Antibody is stable for 24 months. Non-hazardous.

Application Note

Immunohistochemistry (Formalin-fixed) (1-2ug/ml for 30 min at RT), (Staining of formalin-fixed tissues requires heating tissue sections in 10mM Tris with 1mM EDTA, pH 9.0, for 45 min at 95°C followed by cooling at RT for 20 minutes);

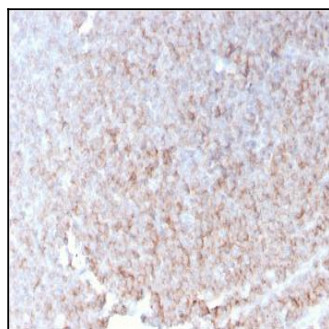


Fig. 1: Formalin-fixed, paraffin-embedded human spleen stained with CD21 Recombinant Mouse Monoclonal Antibody (rCR2/1952).

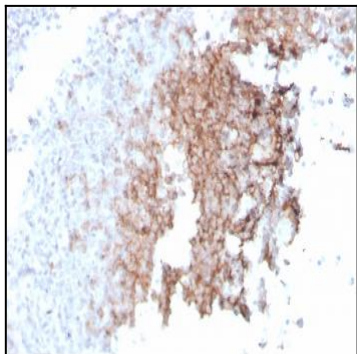


Fig. 2: Formalin-fixed, paraffin-embedded human spleen stained with CD21 Recombinant Mouse Monoclonal Antibody (rCR2/1952).

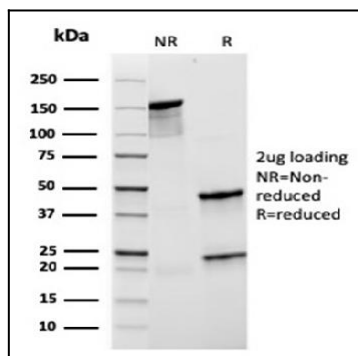


Fig. 3: SDS-PAGE Analysis Purified CD21 Recombinant Mouse Monoclonal Antibody (rCR2/1952). Confirmation of Integrity and Purity of Antibody.