

## 36-2129: Anti-Catenin, alpha-1 (CTNNA1) Monoclonal Antibody(Clone: 1G5)

<b>Clonality :</b>	Monoclonal
<b>Clone Name :</b>	1G5
<b>Application :</b>	FACS,IF,WB
<b>Reactivity :</b>	Human
<b>Gene :</b>	CTNNA1
<b>Gene ID :</b>	1495
<b>Uniprot ID :</b>	P35221
<b>Alternative Name :</b>	Alpha E-catenin; Cadherin-associated protein; CAP102; Catenin alpha-1; CTNNA1; Renal carcinoma antigen NY-REN-13
<b>Isotype :</b>	Mouse IgG1, kappa
<b>Immunogen Information :</b>	Human alpha catenin fusion protein

### Description

Recognizes a protein of 102kDa, identified as Catenin, alpha-1. Catenins comprise a large family of Ca<sup>2+</sup>-dependent, homotypic cell-cell adhesion molecules that play important roles in development, epithelial cell polarity and tumor progression. Alpha-catenin is a key regulator of actin dynamics in cell-cell adhesion. During cell-cell adhesion, -catenin and links the cadherins to actin associated with the cytoskeleton. Alpha-catenin also regulates the beta-catenin signaling in various cells. It displays the tumor suppressor activity and is found to be down regulated in some forms of breast cancer.'

### Product Info

<b>Amount :</b>	20 µg / 100 µg
<b>Content :</b>	200 µg/ml of Ab Purified from Bioreactor Concentrate by Protein A/G. Prepared in 10mM PBS with 0.05% BSA & 0.05% azide. Also available WITHOUT BSA & azide at 1.0mg/ml.
<b>Storage condition :</b>	Antibody with azide - store at 2 to 8°C. Antibody without azide - store at -20 to -80°C. Antibody is stable for 24 months. Non-hazardous.

### Application Note

Flow Cytometry (1-2ug/million cells); Immunofluorescence (1-2ug/ml); Western Blot (1-2ug/ml);

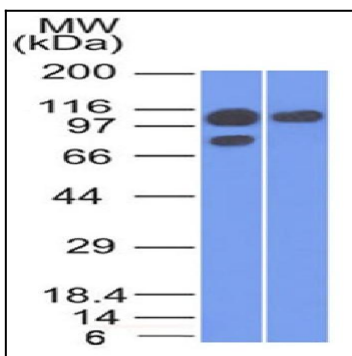


Fig. 1: Western Blot of A431 and MCF-7 cell lysate using Catenin, alpha-1 Mouse Monoclonal Antibody (1G5).

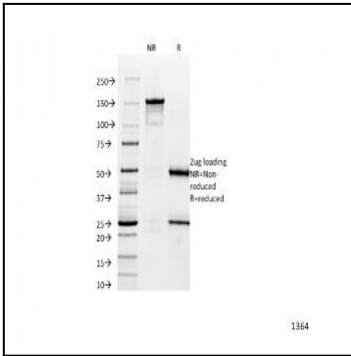


Fig. 2: SDS-PAGE Analysis Purified Catenin, alpha-1 Mouse Monoclonal Antibody (1G5).