

### 36-2135: Anti-Catenin, beta (p120) Monoclonal Antibody(Clone: 5H10)

<b>Clonality :</b>	Monoclonal
<b>Clone Name :</b>	5H10
<b>Application :</b>	FACS,IF,WB,IHC
<b>Reactivity :</b>	Human, Mouse
<b>Gene :</b>	CTNNB1
<b>Gene ID :</b>	1499
<b>Uniprot ID :</b>	P35222
<b>Alternative Name :</b>	Cadherin associated protein, beta 1 88kDa, Catenin beta-1, CATNB, CHBCAT, CTNNB1
<b>Isotype :</b>	Mouse IgG1, kappa
<b>Immunogen Information :</b>	Fusion protein consisting of the maltose binding protein fused to a 100 amino acid segment of the C-terminus of chicken beta-Catenin

#### Description

Beta-catenin associates with the cytoplasmic portion of E-cadherin, which is necessary for the function of E-cadherin as an adhesion molecule. In normal tissues, beta-catenin is localized to the membrane of epithelial cells, consistent with its role in the cell adhesion complex. In breast ductal neoplasia, beta-catenin is usually localized in cellular membranes. However, in lobular neoplasia, a marked redistribution of beta-catenin throughout the cytoplasm results in a diffuse cytoplasmic pattern. Immuno-staining of beta-catenin and E-cadherin helps in the accurate identification of ductal and lobular neoplasms, including a distinction between low-grade ductal carcinoma in situ (DCIS) and lobular carcinoma. Additionally, some rectal and gastric adenocarcinomas demonstrate diffuse cytoplasmic beta-catenin staining and a lack of membranous staining, mimicking the staining pattern observed with lobular breast carcinomas.

#### Product Info

<b>Amount :</b>	20 µg / 100 µg
<b>Content :</b>	200 µg/ml of Ab Purified from Bioreactor Concentrate by Protein A/G. Prepared in 10mM PBS with 0.05% BSA & 0.05% azide. Also available WITHOUT BSA & azide at 1.0mg/ml.
<b>Storage condition :</b>	Antibody with azide - store at 2 to 8°C. Antibody without azide - store at -20 to -80°C. Antibody is stable for 24 months. Non-hazardous.

#### Application Note

Flow Cytometry (1-2ug/million cells); Immunofluorescence (1-2ug/ml); Western Blot (1-2ug/ml); Immunohistochemistry (Formalin-fixed) (1-2ug/ml for 30 minutes at RT)(Staining of formalin-fixed tissues requires heating tissue sections in 1mM EDTA, pH 9.0, for 45 min at 95&degC followed by cooling at RT for 20 minutes)

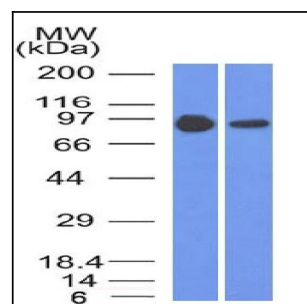


Fig. 1: Western Blot of A431 and A549 cell lysates using Catenin, beta Mouse Monoclonal Antibody (5H10)

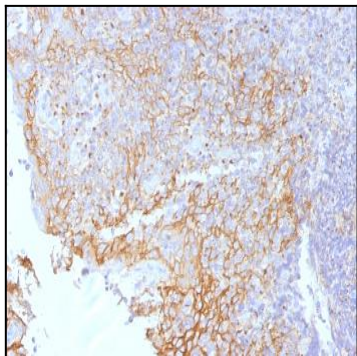


Fig. 2: Formalin-fixed, paraffin-embedded human Tonsil stained with Beta-Catenin (p120) Monoclonal Antibody (5H10).

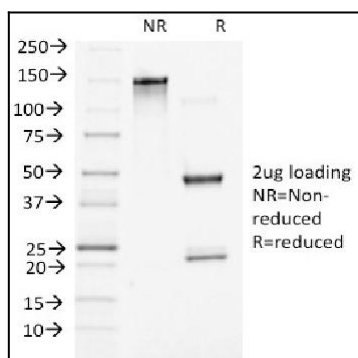


Fig. 3: SDS-PAGE Analysis of Purified Beta-Catenin (p120) Monoclonal Antibody (5H10). Confirmation of Purity and Integrity of Antibody