

36-2151: Anti-BTLA Monoclonal Antibody(Clone: BTLA/1528)

Clonality :	Monoclonal
Clone Name :	BTLA/1528
Application :	ELISA
Reactivity :	Human
Gene :	BTLA
Gene ID :	151888
Uniprot ID :	Q7Z69
Alternative Name :	B and T lymphocyte associated protein; B and T lymphocyte attenuator; B and T lymphocyte associated; B- and T-lymphocyte attenuator; B- and T-lymphocyte-associated protein; BTLA; BTLA_HUMAN; BTLA1; CD272; CD272 antigen; FLJ16065; MGC129743
Isotype :	Mouse IgG2b, kappa
Immunogen Information :	Recombinant full-length human BTLA protein

Description

B and T lymphocyte attenuator (BTLA) is an immunoglobulin domain-containing glycoprotein whose expression is induced during T-cell activation. BTLA is similar to CTLA-4 and PD-1, all of which are coinhibitory receptors belonging to the CD28 family. However, unlike CTLA-4 and PD-1, BTLA does not interact with B7-Ig family counter receptors. Rather, the herpesvirus entry mediator (HVEM), a TNF receptor, acts as a molecular switch that modulates T-cell activation by propagating inhibitory signals through BTLA. The BTLA/HVEM interaction is conserved between Mouse and human, suggesting that this system is an important pathway regulating lymphocyte activation.

Product Info

Amount :	20 µg / 100 µg
Content :	200 µg/ml of Ab Purified from Bioreactor Concentrate by Protein A/G. Prepared in 10mM PBS with 0.05% BSA & 0.05% azide. Also available WITHOUT BSA & azide at 1.0mg/ml.
Storage condition :	Antibody with azide - store at 2 to 8°C. Antibody without azide - store at -20 to -80°C. Antibody is stable for 24 months. Non-hazardous.

Application Note

ELISA (For coating, order antibody without BSA),

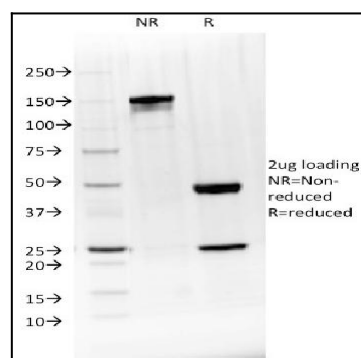


Fig. 1: SDS-PAGE Analysis Purified BTLA Mouse Monoclonal Antibody (BTLA/1528). Confirmation of Integrity and Purity of Antibody.