

## 36-2152: Anti-Cytochrome P450 1A1/1A2 Monoclonal Antibody(Clone: MC1)

<b>Clonality :</b>	Monoclonal
<b>Clone Name :</b>	MC1
<b>Application :</b>	IF, WB, IHC
<b>Reactivity :</b>	Human, Mouse, Rat
<b>Gene :</b>	CYP1A1 / CYP1A2
<b>Gene ID :</b>	1543; 1544
<b>Uniprot ID :</b>	P04798; P05177
<b>Alternative Name :</b>	Aryl hydrocarbon hydroxylase; CP11; CP12; CYP1A1; CYP1A2; CYPIA1; CYPIA2; Cytochrome P450 family 1 subfamily A polypeptide 1; Cytochrome P450 family 1 subfamily A polypeptide 2; P1 450; P3 450; P450 form 4; P450 form 6; P450 P1; P450 P3
<b>Isotype :</b>	Mouse IgG1, kappa
<b>Immunogen Information :</b>	3-methylcholanthrene induced rat cytochrome P450 protein.

### Description

Cytochrome P450 oxidase (commonly abbreviated CYP) is a generic term for a large number of related, but distinct, oxidative enzymes important in vertebrate physiology. The cytochrome P450 mixed-function monooxygenase system is probably the most important element of Phase I metabolism in mammals. P450s are membrane-bound, either in the inner membrane of mitochondria or in the endoplasmic reticulum of cells where they metabolise thousands of endogenous and exogenous compounds. In the liver, these substrates include toxins, drugs, and other unneeded and potentially harmful molecules. Humans have 18 families of cytochrome P450 genes and 43 subfamilies; the CYP1 family is involved in drug metabolism and includes 3 subfamilies, 3 genes and 1 pseudogene.

### Product Info

<b>Amount :</b>	20 µg / 100 µg
<b>Content :</b>	200 µg/ml of Ab Purified from Bioreactor Concentrate by Protein A/G. Prepared in 10mM PBS with 0.05% BSA & 0.05% azide. Also available WITHOUT BSA & azide at 1.0mg/ml.
<b>Storage condition :</b>	Antibody with azide - store at 2 to 8°C. Antibody without azide - store at -20 to -80°C. Antibody is stable for 24 months. Non-hazardous.

### Application Note

Immunofluorescence (1-2ug/ml); Western Blot (1-2ug/ml); Immunohistochemistry (Formalin-fixed) (0.25-0.5ug/ml for 30 minutes at RT)(Staining of formalin-fixed tissues requires heating tissue sections in 10mM Tris with 1mM EDTA, pH 9.0, for 45 min at 95°C followed by cooling at RT for 20 minutes);

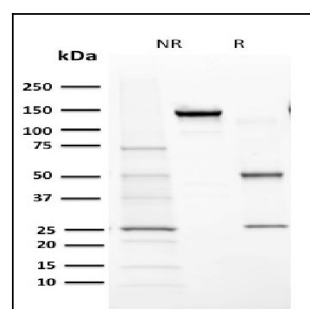


Fig. 1: SDS-PAGE Analysis Purified Cytochrome P450 1A1/1A2 Mouse Monoclonal Antibody (MC1). Confirmation of Purity and Integrity of Antibody.