

36-2162: Anti-Desmin (Muscle Cell Marker) Monoclonal Antibody(Clone: DES/1711)

Clonality :	Monoclonal
Clone Name :	DES/1711
Application :	IF,FACS,WB,IHC
Reactivity :	Human, Mouse, Rat
Gene :	DES
Gene ID :	1674
Uniprot ID :	P17661
Alternative Name :	CMD1I; CSM1; CSM2; DES; Intermediate filament protein
Isotype :	Mouse IgG1, kappa
Immunogen Information :	Recombinant human desmin protein

Description

Cytoskeletal intermediate filaments (IFs) constitute a diverse group of proteins that are expressed in a highly tissue-specific manner. IFs are constructed from two-chain -helical coiled-coil molecules arranged on an imperfect helical lattice, and have been widely used as markers for distinguishing individual cell types within a tissue and identifying the origins of metastatic tumors. Vimentin is an IF general marker of cells originating in the mesenchyme. Vimentin and Desmin, a related class III IF, are both expressed during skeletal muscle development. Desmin, a 469 amino acid protein found near the Z line in sarcomeres, is expressed more frequently in adult differentiated state tissues. Anti-desmin detects cells of normal smooth, skeletal, and cardiac muscles. Antibody reacts with leiomyomas, leiomyosarcoma, rhabdomyomas, rhabdomyosarcoma, and perivascular cells of glomus tumors of the skin.

Product Info

Amount :	20 µg / 100 µg
Content :	200 µg/ml of Ab Purified from Bioreactor Concentrate by Protein A/G. Prepared in 10mM PBS with 0.05% BSA & 0.05% azide. Also available WITHOUT BSA & azide at 1.0mg/ml.
Storage condition :	Antibody with azide - store at 2 to 8°C. Antibody without azide - store at -20 to -80°C. Antibody is stable for 24 months. Non-hazardous.

Application Note

Immunofluorescence (1-2ug/ml); Flow Cytometry (1-2ug/million cells); Western Blot (1-2ug/ml); Immunohistochemistry (Formalin-fixed) (1-2ug/ml for 30 minutes at RT)(Staining of formalin-fixed tissues requires heating tissue sections in 10mM Tris with 1mM EDTA, pH 9.0, for 45 min at 95°C followed by cooling at RT for 20 minutes);

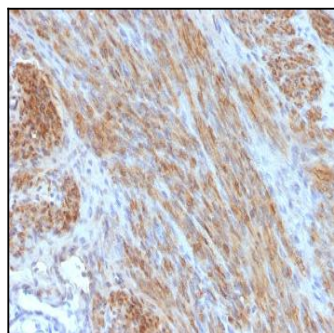


Fig. 1: Formalin-fixed, paraffin-embedded human Uterus stained with Desmin Monoclonal Antibody (DES/1711)

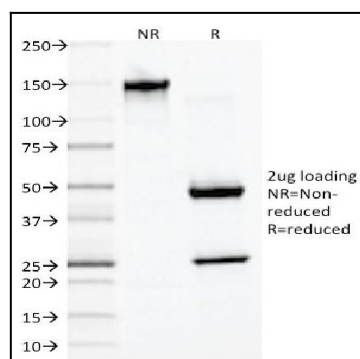


Fig. 2: SDS-PAGE Analysis of Purified Desmin Monoclonal Antibody (DES/1711).
Confirmation of Purity and Integrity of Antibody