

### 36-2245: Anti-Estrogen Receptor, alpha (Marker of Estrogen Dependence) Monoclonal Antibody(Clone: 1D5)

<b>Clonality :</b>	Monoclonal
<b>Clone Name :</b>	1D5
<b>Application :</b>	IHC
<b>Reactivity :</b>	Human
<b>Gene :</b>	ESR1
<b>Gene ID :</b>	2099
<b>Uniprot ID :</b>	P03372
<b>Alternative Name :</b>	Estrogen Receptor alpha delta 4*5,6,7*/654 isoform; Estrogen Receptor alpha delta 4 +49 isoform; Nuclear receptor subfamily 3 group A member 1
<b>Isotype :</b>	Mouse IgG1, kappa
<b>Immunogen Information :</b>	Recombinant human Estrogen Receptor alpha protein

#### Description

This MAb is specific to ER alpha and shows minimal cross-reaction with other members of the family. ER is an important regulator of growth and differentiation in the mammary gland. Presence of ER in breast tumors indicates an increased likelihood of response to anti-estrogen (e.g. tamoxifen) therapy. It strongly stains nuclei of epithelial cells in breast carcinomas.

#### Product Info

<b>Amount :</b>	0.1 ml / 0.5 ml
<b>Content :</b>	Tissue culture supernatant with 0.05% Azide. Contact us if you require it in a different format.
<b>Storage condition :</b>	Store at 2 to 8°C. Antibody is stable for 24 months. Non-hazardous.

#### Application Note

Immunohistochemistry (Formalin-fixed) (1:100-1:200 for 30 minutes at RT) ,(Staining of formalin-fixed tissues requires heating tissue sections in 10mM Tris with 1mM EDTA, pH 9.0, for 45 min at 95°C followed by cooling at RT for 20 minutes);

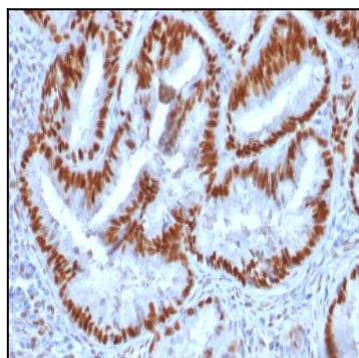


Fig. 1: Formalin-fixed, paraffin-embedded human Endometrial Carcinoma stained with Estrogen Receptor alpha Mouse Monoclonal Antibody (1D5).