

## 36-2267: Anti-ALDH1A1 (Aldehyde Dehydrogenase 1A1) Monoclonal Antibody(Clone: ALDH1A1/1381)

<b>Clonality :</b>	Monoclonal
<b>Clone Name :</b>	ALDH1A1/1381
<b>Application :</b>	WB,IHC
<b>Reactivity :</b>	Human
<b>Gene :</b>	ALDH1A1
<b>Gene ID :</b>	216
<b>Uniprot ID :</b>	P00352
<b>Alternative Name :</b>	Acetaldehyde dehydrogenase 1; AHD2; ALDC; Aldehyde dehydrogenase 1 soluble; Aldehyde dehydrogenase 1A1; Aldehyde dehydrogenase family 1 member A1; ALDH-E1; ALDH1; ALDH1A1; epididymis luminal protein 12; epididymis luminal protein 9; epididymis secretory sperm binding protein Li 53e; HEL-S-53e; PUMB1; RALDH1; Retinal dehydrogenase 1
<b>Isotype :</b>	Mouse IgG1, kappa
<b>Immunogen Information :</b>	Recombinant fragment (around aa 315-434) of human ALDH1A1 protein (exact sequence is proprietary).

### Description

ALDH1A1 belongs to the ALDH enzymes, a family of evolutionarily conserved enzymes comprised of 19 isoforms that are localized in the cytoplasm, mitochondria or nucleus. ALDH1A1 is predominantly expressed in the epithelium of testis, brain, eye, liver, kidney, as well as neural and hematopoietic stem cells. Reportedly, high ALDH1A1 expression is found in solitary fibrous tumor (SFT) and hemangiopericytoma (HPC), compared to meningiomas and synovial sarcomas. In combination with CD34, ALDH1A1 may be useful for the differentiation among SFT, HPC, meningioma, and synovial sarcoma.

### Product Info

<b>Amount :</b>	20 µg / 100 µg
<b>Content :</b>	200 µg/ml of Ab Purified from Bioreactor Concentrate by Protein A/G. Prepared in 10mM PBS with 0.05% BSA & 0.05% azide. Also available WITHOUT BSA & azide at 1.0mg/ml.
<b>Storage condition :</b>	Antibody with azide - store at 2 to 8°C. Antibody without azide - store at -20 to -80°C. Antibody is stable for 24 months. Non-hazardous.

### Application Note

Western Blot (1-2ug/ml); Immunohistochemistry (Formalin-fixed) (1-2ug/ml for 30 min at RT)(Staining of formalin-fixed tissues requires heating tissue sections in 10mM Tris with 1mM EDTA, pH 9.0, for 45 min at 95°C followed by cooling at RT for 20 minutes);

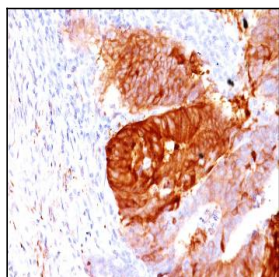


Fig. 1: Formalin-fixed, paraffin-embedded human Colon Carcinoma stained with ALDH1A1 Mouse Monoclonal Antibody (ALDH1A1/1381).

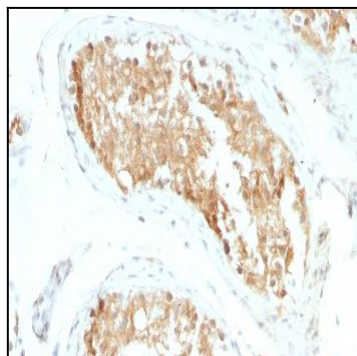


Fig. 2: Formalin-fixed, paraffin-embedded human Testicular Carcinoma stained with ALDH1A1 Mouse Monoclonal Antibody (ALDH1A1/1381).

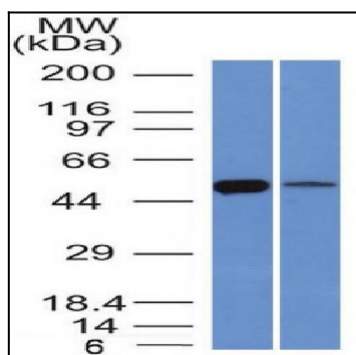


Fig. 3: Western Blot of K562 and Lung lysate ALDH1A1 Mouse Monoclonal Antibody (ALDH1A1/1381).

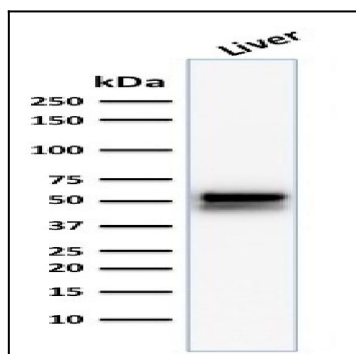


Fig. 4: Western Blot Analysis of human Liver tissue lysate using ALDH1A1 Mouse Monoclonal Antibody (ALDH1A1/1381).

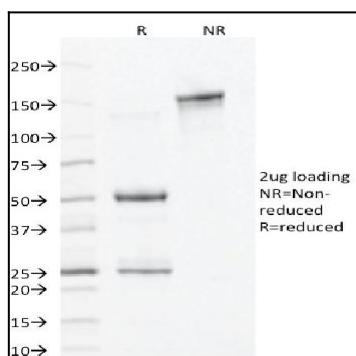


Fig. 5: SDS-PAGE Analysis Purified ALDH1A1 Mouse Monoclonal Antibody (ALDH1A1/1381). Confirmation of Integrity and Purity of Antibody.