

36-2309: Anti-CELA3B / ELA3B (Pancreatic Function Marker) Monoclonal Antibody(Clone: CELA3B/1257)

Clonality :	Monoclonal
Clone Name :	CELA3B/1257
Application :	ELISA, WB, IHC
Reactivity :	Human, Mouse, Rat
Gene :	CELA3B
Gene ID :	23436
Uniprot ID :	P08861
Alternative Name :	Chymotrypsin like elastase family member 3B (CELA3B); ELA3B; Elastase IIIB; Protease E
Isotype :	Mouse IgG1, kappa
Immunogen Information :	Recombinant human CELA3B protein fragment (around aa 82-238) (exact sequence is proprietary)

Description

This MAb recognizes a protein of ~30kDa, identified as CELA3B (Chymotrypsin like elastase family member 3B). Elastases form a subfamily of serine proteases that hydrolyze many proteins in addition to elastin. Humans have six elastase genes which encode the structurally similar proteins elastase 1, 2, 2A, 2B, 3A, and 3B. Unlike other elastases, elastase 3B has little elastolytic activity. Like most of the human elastases, elastase 3B is secreted from the pancreas as a zymogen and, like other serine proteases such as trypsin, chymotrypsin and kallikrein; it has a digestive function in the intestine. Elastase 3B preferentially cleaves proteins after alanine residues. Elastase 3B may also function in the intestinal transport and metabolism of cholesterol. Both elastase 3A and elastase 3B have been referred to as protease E and as elastase 1, and excretion of this protein in fecal material is frequently used as a measure of pancreatic function in clinical assays.

Product Info

Amount :	20 µg / 100 µg
Content :	200 µg/ml of Ab Purified from Bioreactor Concentrate by Protein A/G. Prepared in 10mM PBS with 0.05% BSA & 0.05% azide. Also available WITHOUT BSA & azide at 1.0mg/ml.
Storage condition :	Antibody with azide - store at 2 to 8°C. Antibody without azide - store at -20 to -80°C. Antibody is stable for 24 months. Non-hazardous.

Application Note

ELISA (Use Ab at 2-4ug/ml for coating) (Order Ab without BSA)Western Blot (1-2ug/ml); Immunohistochemistry (Formalin-fixed) (1-2ug/ml for 30 minutes at RT)(Staining of formalin-fixed tissues requires heating tissue sections in 10mM Tris with 1mM EDTA, pH 9.0, for 45 min at 95°C followed by cooling at RT for 20 minutes);

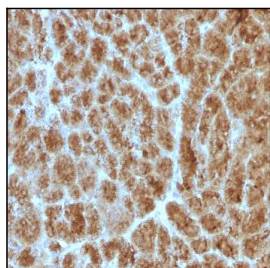


Fig. 1: Formalin-fixed, paraffin-embedded human Pancreas stained with CELA3B Mouse Monoclonal Antibody (CELA3B/1257)

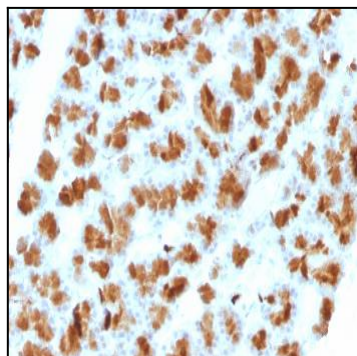


Fig. 2: Formalin-fixed, paraffin-embedded Rat Pancreas stained with CELA3B Mouse Monoclonal Antibody (CELA3B/1257).

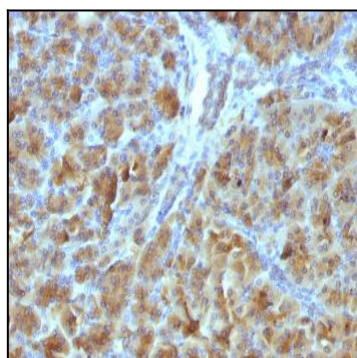


Fig. 3: Formalin-fixed, paraffin-embedded Mouse Pancreas stained with CELA3B Mouse Monoclonal Antibody (CELA3B/1257).

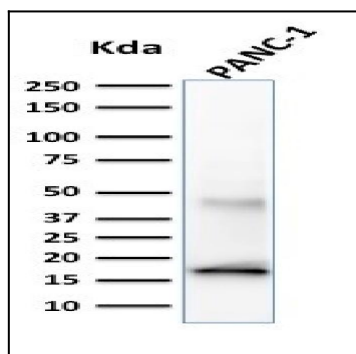


Fig. 4: Western Blot Analysis of PANC-1 cell lysate using CELA3B Mouse Monoclonal Antibody (CELA3B/1257).

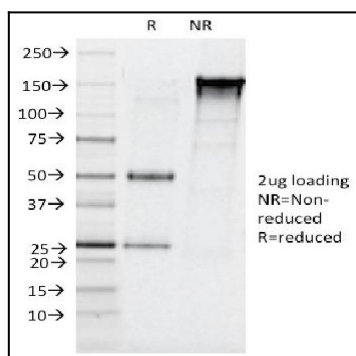


Fig. 5: SDS-PAGE Analysis Purified CELA3B Mouse Monoclonal Antibody (CELA3B/1257). Confirmation of Purity and Integrity of Antibody.