

36-2315: Anti-FOLH1 / PSMA (Prostate Epithelial Marker) Monoclonal Antibody(Clone: FOLH1/2121)

Clonality :	Monoclonal
Clone Name :	FOLH1/2121
Application :	ELISA
Reactivity :	Human
Gene :	FOLH1
Gene ID :	2346
Uniprot ID :	Q04609
Alternative Name :	Cell growth-inhibiting gene 27 protein (GIG27); Folylpoly-gamma-glutamate carboxypeptidase (FGCP); Glutamate carboxylase II (GCPII); N-acetylated-alpha-linked acidic dipeptidase I (NAALAD1 or NAALADase); Prostate-specific membrane antigen (PSM or PSMA); Pteroylpoly-gamma-glutamate carboxypeptidase
Isotype :	Mouse IgG2b, kappa
Immunogen Information :	Recombinant human FOLH1 protein fragment (around aa 232-433) (exact sequence is proprietary)

Description

Folate hydrolase 1 (FOLH1), also known as Prostate-specific membrane antigen (PSMA), is a type II transmembrane glycoprotein belonging to the M28 peptidase family. FOLH1 has two enzymatic activities, one as a prostate-specific integral membrane folate hydrolase and the other as a carboxypeptidase. In the prostate the protein is up-regulated in cancerous cells and is used as an effective diagnostic and prognostic indicator of prostate cancer.

Product Info

Amount :	20 µg / 100 µg
Content :	200 µg/ml of Ab Purified from Bioreactor Concentrate by Protein A/G. Prepared in 10mM PBS with 0.05% BSA & 0.05% azide. Also available WITHOUT BSA & azide at 1.0mg/ml.
Storage condition :	Antibody with azide - store at 2 to 8°C. Antibody without azide - store at -20 to -80°C. Antibody is stable for 24 months. Non-hazardous.

Application Note

ELISA (For coating, order Ab without BSA);

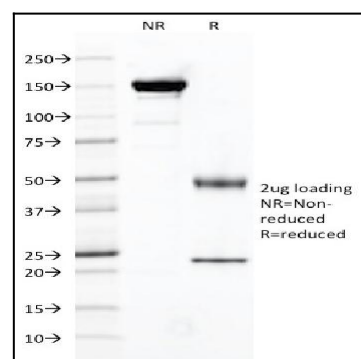


Fig. 1: SDS-PAGE Analysis Purified FOLH1 Mouse Monoclonal Antibody (FOLH1/2121). Confirmation of Purity and Integrity of Antibody.