

36-2327: Anti-ALK (Anaplastic Lymphoma Kinase) / CD246 Monoclonal Antibody(Clone: ALK/1503)

Clonality :	Monoclonal
Clone Name :	ALK/1503
Application :	WB
Reactivity :	Human
Gene :	ALK
Gene ID :	238
Uniprot ID :	Q9UM73
Alternative Name :	ALK Tyrosine Kinase Receptor, ALK/NPM1 fusion gene, Anaplastic lymphoma kinase Ki1, Anaplastic Lymphoma Kinase p80, anaplastic lymphoma receptor tyrosine kinase, CD246, mutant anaplastic lymphoma kinase, NBLST3, Tcrz, TFG/ALK
Isotype :	Mouse IgG1, kappa
Immunogen Information :	Recombinant human ALK protein fragment (aa1360-1460)

Description

The wild-type anaplastic lymphoma kinase (ALK) protein is a 200kDa transmembrane receptor tyrosine kinase. Its expression is restricted to a few scattered cells in the nervous system (some glial cells and neurons, and a few endothelial cells and pericytes). The hybrid gene, NPM-ALK, created by the t(2;5)(p23;q35) chromosomal translocation encodes part of the nucleolar phosphoprotein, nucleophosmin (NPM), joined to the entire cytoplasmic portion of the anaplastic lymphoma kinase (ALK) receptor tyrosine kinase. As a consequence, the ALK gene comes under the control of the NPM promoter, which induces a permanent and ubiquitous transcription of the NPM-ALK hybrid gene, resulting in the production of a 80kDa NPM-ALK chimeric protein. This translocation is found in anaplastic large cell lymphomas (ALCL). Reportedly, expression of ALK indicates a better prognosis. Approximately 5%-10% of non-small cell lung carcinomas also express ALK protein producing a cytoplasmic staining pattern. This MAb also reacts with blood vessels that serves as an internal positive control.

Product Info

Amount :	20 µg / 100 µg
Content :	200 µg/ml of Ab Purified from Bioreactor Concentrate by Protein A/G. Prepared in 10mM PBS with 0.05% BSA & 0.05% azide. Also available WITHOUT BSA & azide at 1.0mg/ml.
Storage condition :	Antibody with azide - store at 2 to 8°C. Antibody without azide - store at -20 to -80°C. Antibody is stable for 24 months. Non-hazardous.

Application Note

Western Blot (1-2ug/ml);

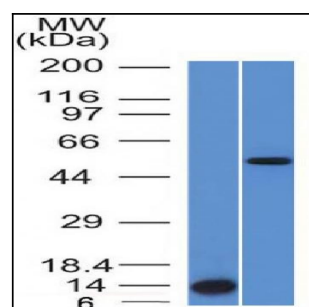


Fig. 1: Western Blot Analysis (A) Recombinant Protein (B) HepG2 cell lysate Using ALK-1 Monoclonal Antibody (ALK/1503).