

36-2333: Anti-Alkaline Phosphatase (Tissue-Nonspecific) Monoclonal Antibody(Clone: ALPL/597)

Clonality :	Monoclonal
Clone Name :	ALPL/597
Application :	IHC
Reactivity :	Human
Gene :	ALPL
Gene ID :	249
Uniprot ID :	P05186
Alternative Name :	Alkaline phosphatase, germ cell; Alkaline phosphatase, testicular and thymus; Alkaline phosphatase liver/bone/kidney; Alkaline phosphatase, tissue-nonspecific; ALPG; ALPL; Germ cell alkaline phosphatase; Testicular and thymus alkaline phosphatase; Tissue non-specific alkaline phosphatase; Tissue nonspecific ALP (TNAP or TNSALP)
Isotype :	Mouse IgG1, kappa
Immunogen Information :	Recombinant human ALPL protein

Description

There are at least four distinct but related alkaline phosphatases: intestinal, placental, placental-like, and liver/bone/kidney (tissue non-specific). The first three are located together on chromosome 2, while the tissue non-specific form is located on chromosome 1. The product of this gene is a membrane bound glycosylated enzyme that is not expressed in any particular tissue and is, therefore, referred to as the tissue-nonspecific form of the enzyme. The exact physiological function of the alkaline phosphatases is not known. A proposed function of this form of the enzyme is matrix mineralization; however, mice that lack a functional form of this enzyme show normal skeletal development. This enzyme has been linked directly to hypo-phosphatasia, a disorder that is characterized by hypercalcemia and includes skeletal defects.

Product Info

Amount :	20 µg / 100 µg
Content :	200 µg/ml of Ab Purified from Bioreactor Concentrate by Protein A/G. Prepared in 10mM PBS with 0.05% BSA & 0.05% azide. Also available WITHOUT BSA & azide at 1.0mg/ml.
Storage condition :	Antibody with azide - store at 2 to 8°C. Antibody without azide - store at -20 to -80°C. Antibody is stable for 24 months. Non-hazardous.

Application Note

Immunohistochemistry (Formalin-fixed) (1-2ug/ml for 30 minutes at RT)(Staining of formalin-fixed tissues requires heating tissue sections in 10mM Tris with 1mM EDTA, pH 9.0, for 45 min at 95°C followed by cooling at RT for 20 minutes)



Fig. 1: Formalin-fixed, paraffin-embedded human Endometrial Carcinoma stained with Alkaline Phosphatase Mouse Monoclonal Antibody (ALPL/597).

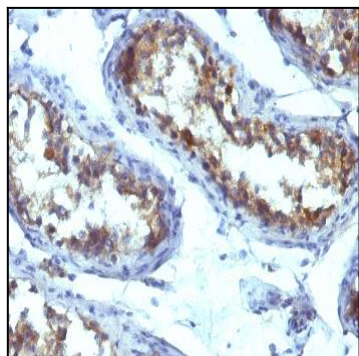


Fig. 2: Formalin-fixed, paraffin-embedded human Testicular Carcinoma stained with Alkaline Phosphatase Mouse Monoclonal Antibody (ALPL/597).

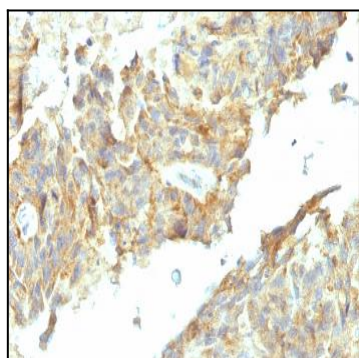


Fig. 3: Formalin-fixed, paraffin-embedded human Ovarian Carcinoma stained with Alkaline Phosphatase Mouse Monoclonal Antibody (ALPL/597).

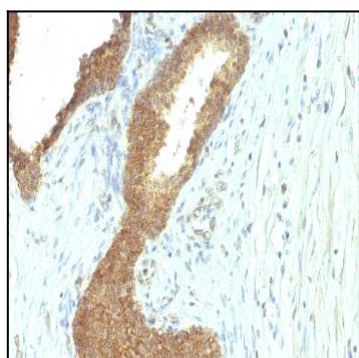


Fig. 4: Formalin-fixed, paraffin-embedded human Colon Carcinoma stained with Alkaline Phosphatase Mouse Monoclonal Antibody (ALPL/597).

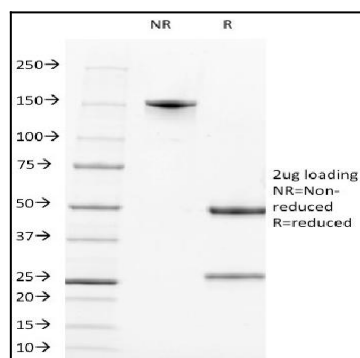


Fig. 5: SDS-PAGE Analysis Purified Alkaline Phosphatase Mouse Monoclonal Antibody (ALPL/597). Confirmation of Purity and Integrity of Antibody.