

36-2336: Anti-FSH-Receptor (Ovarian Marker) Monoclonal Antibody(Clone: FSHR/1400)

Clonality :	Monoclonal
Clone Name :	FSHR/1400
Application :	IHC
Reactivity :	Human
Gene :	FSHR
Gene ID :	2492
Uniprot ID :	P23945
Alternative Name :	Follicle-stimulating hormone receptor; Follitropin receptor; FSH receptor; FSH-R; FSHRO; LGR1; ODG1; ovarian dysgenesis 1
Isotype :	Mouse IgG1, kappa
Immunogen Information :	Recombinant human FSHR protein

Description

Follicle-stimulating hormone receptor (FSHR) is a 695 amino acid G protein coupled receptor. FSH binds to the receptor in a hand-clasp fashion via its a condition characterized by the presence of multiple serous and hemorrhagic follicular cysts lined by luteinized cells.

Product Info

Amount :	20 µg / 100 µg
Content :	200 µg/ml of Ab Purified from Bioreactor Concentrate by Protein A/G. Prepared in 10mM PBS with 0.05% BSA & 0.05% azide. Also available WITHOUT BSA & azide at 1.0mg/ml.
Storage condition :	Antibody with azide - store at 2 to 8°C. Antibody without azide - store at -20 to -80°C. Antibody is stable for 24 months. Non-hazardous.

Application Note

Immunohistochemistry (Formalin-fixed) (0.1-0.2µg/ml for 30 min at RT)(Staining of formalin-fixed tissues requires heating tissue sections in 10mM Tris with 1mM EDTA, pH 9.0, for 45 min at 95°C followed by cooling at RT for 20 minutes);

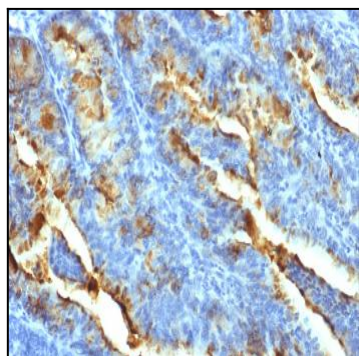


Fig. 1: Formalin-fixed, paraffin-embedded human Uterine Carcinoma stained with FSH Receptor Mouse Monoclonal Antibody (FSHR/1400).

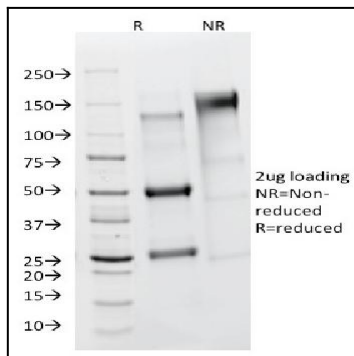


Fig. 2: SDS-PAGE Analysis Purified FSH Receptor Mouse Monoclonal Antibody (FSHR/1400). Confirmation of Purity and Integrity of Antibody.