

## 36-2344: Anti-Ferritin, Light Chain (Node-Negative Breast Tumor Prognostic Marker) Monoclonal Antibody(Clone: FTL/1389)

<b>Clonality :</b>	Monoclonal
<b>Clone Name :</b>	FTL/1389
<b>Application :</b>	ELISA, WB
<b>Reactivity :</b>	Human
<b>Gene :</b>	FTL
<b>Gene ID :</b>	2512
<b>Uniprot ID :</b>	P02792
<b>Alternative Name :</b>	Ferritin L chain; Ferritin L subunit; Ferritin light chain; Ferritin light polypeptide; FTL; LFTD; NBIA3
<b>Isotype :</b>	Mouse IgG1, kappa
<b>Immunogen Information :</b>	Recombinant fragment (around aa 38-165) of human FTL protein (exact sequence is proprietary)

### Description

Mammalian ferritins consist of 24 subunits made up of 2 types of polypeptide chains, ferritin heavy chain and ferritin light chain. Ferritin heavy chains catalyze the first step in iron storage, the oxidation of Fe (II), whereas ferritin light chains promote the nucleation of ferrihydrite, enabling storage of Fe (III). Light chain ferritin is involved in cataracts by at least two mechanisms, hereditary hyperferritinemia cataract syndrome, in which light chain ferritin is overexpressed, and oxidative stress, an important factor in the development of ageing-related cataracts.

### Product Info

<b>Amount :</b>	20 µg / 100 µg
<b>Content :</b>	200 µg/ml of Ab Purified from Bioreactor Concentrate by Protein A/G. Prepared in 10mM PBS with 0.05% BSA & 0.05% azide. Also available WITHOUT BSA & azide at 1.0mg/ml.
<b>Storage condition :</b>	Antibody with azide - store at 2 to 8°C. Antibody without azide - store at -20 to -80°C. Antibody is stable for 24 months. Non-hazardous.

### Application Note

ELISA (For coating, order antibody without BSA); Western Blot (1-2ug/ml);

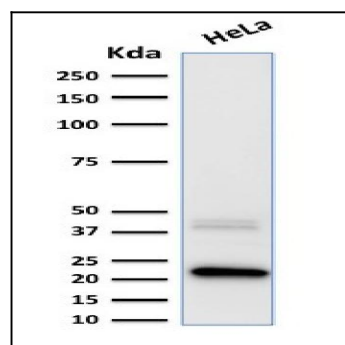


Fig. 1: Formalin-fixed, paraffin-embedded human Pancreas stained with Ferritin, Light Chain Mouse Monoclonal Antibody (FTL/1389).

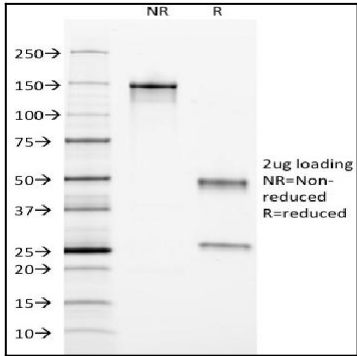


Fig. 2: Formalin-fixed, paraffin-embedded human Pancreas stained with Ferritin, Light Chain Mouse Monoclonal Antibody (FTL/1389).

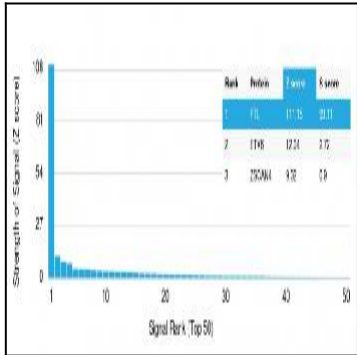


Fig. 3: Western Blot Analysis of human HeLa cell lysate using Ferritin, Light Chain Mouse Monoclonal Antibody (FTL/1389).