

36-2345: Anti-Ferritin, Light Chain (Node-Negative Breast Tumor Prognostic Marker) Monoclonal Antibody(Clone: rFTL/1388)

Clonality :	Monoclonal
Clone Name :	rFTL/1388
Application :	WB,IHC
Reactivity :	Human
Gene :	FTL
Gene ID :	2512
Uniprot ID :	P02792
Alternative Name :	Ferritin L chain; Ferritin L subunit; Ferritin light chain; Ferritin light polypeptide; FTL; LFTD; NBIA3
Isotype :	Mouse IgG1, kappa
Immunogen Information :	Recombinant fragment (around aa 38-165) of human FTL protein (exact sequence is proprietary)

Description

Mammalian ferritins consist of 24 subunits made up of 2 types of polypeptide chains, ferritin heavy chain and ferritin light chain. Ferritin heavy chains catalyze the first step in iron storage, the oxidation of Fe (II), whereas ferritin light chains promote the nucleation of ferrihydrite, enabling storage of Fe (III). Light chain ferritin is involved in cataracts by at least two mechanisms, hereditary hyperferritinemia cataract syndrome, in which light chain ferritin is overexpressed, and oxidative stress, an important factor in the development of ageing-related cataracts.

Product Info

Amount :	20 µg / 100 µg
Content :	200 µg/ml of Ab Purified from Bioreactor Concentrate by Protein A/G. Prepared in 10mM PBS with 0.05% BSA & 0.05% azide. Also available WITHOUT BSA & azide at 1.0mg/ml.
Storage condition :	Antibody with azide - store at 2 to 8°C. Antibody without azide - store at -20 to -80°C. Antibody is stable for 24 months. Non-hazardous.

Application Note

Western Blot (1-2ug/ml); Immunohistochemistry (Formalin-fixed) (0.1-0.2ug/ml for 30 min at RT),(Staining of formalin-fixed tissues requires heating tissue sections in 10mM Tris with 1mM EDTA, pH 9.0, for 45 min at 95°C followed by cooling at RT for 20 minutes);

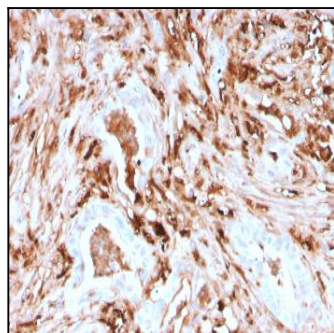


Fig. 1: Formalin-fixed, paraffin-embedded human Pancreas stained with Ferritin, Light Chain Recombinant Mouse Monoclonal Antibody (rFTL/1388).

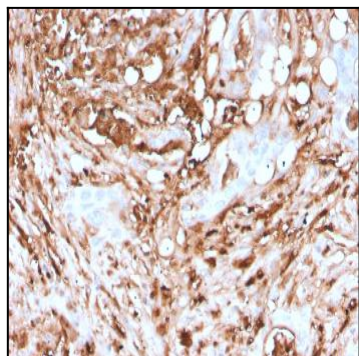


Fig. 2: Formalin-fixed, paraffin-embedded human Pancreas stained with Ferritin, Light Chain Recombinant Mouse Monoclonal Antibody (rFTL/1388).

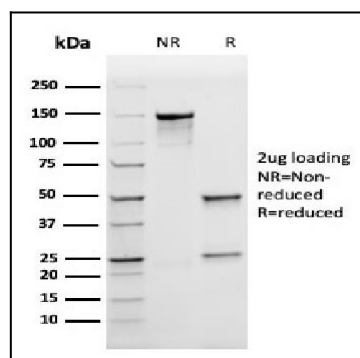


Fig. 3: SDS-PAGE Analysis Purified Ferritin LC Recombinant Mouse Monoclonal Antibody (rFTL/1388). Confirmation of Integrity and Purity of Antibody