

36-2388: Anti-Connexin 32 (Gap Junction Protein) Monoclonal Antibody(Clone: M12.13)

Clonality :	Monoclonal
Clone Name :	M12.13
Application :	IF,FACS,WB,IHC
Reactivity :	Human, Mouse, Rat
Gene :	GJB1
Gene ID :	2705
Uniprot ID :	P08034
Alternative Name :	Charcot Marie Tooth neuropathy X linked; CMTX; CMTX1; Connexin-32; Cx32; GAP junction 28kDa liver protein; Gap junction beta-1 protein; Gap junction protein beta 1 32kD; GJB1
Isotype :	Mouse IgG
Immunogen Information :	Rat junctional complexes

Description

This Ab recognizes a protein of 27-32kDa, identified as Connexin 32. The connexin family of proteins forms hexameric complexes called 'connexons' that facilitate movement of low molecular weight proteins between cells via gap junctions. Connexin proteins share a common topology of four transmembrane therefore, one connexin usually cannot fully substitute for another.

Product Info

Amount :	20 µg / 100 µg
Content :	200 µg/ml of Ab Purified from Bioreactor Concentrate by Protein G. Prepared in 10mM PBS with 0.05% BSA & 0.05% azide. Also available WITHOUT BSA & azide at 1.0mg/ml.
Storage condition :	Antibody with azide - store at 2 to 8°C. Antibody without azide - store at -20 to -80°C. Antibody is stable for 24 months. Non-hazardous.

Application Note

Immunofluorescence (1-2ug/ml); Flow Cytometry (1-2ug/million cells); Western Blot (1-2ug/ml); Immunohistochemistry (Frozen) (1-2ug/ml for 30 minutes at RT)

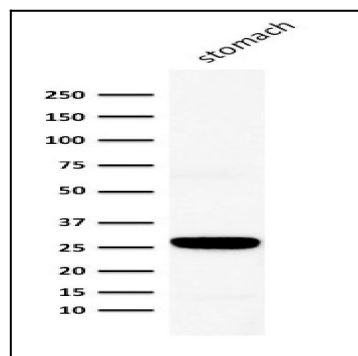


Fig. 1: Western Blot Analysis of human stomach lysate using Connexin 32 Mouse Monoclonal Antibody (Clone M12.13)

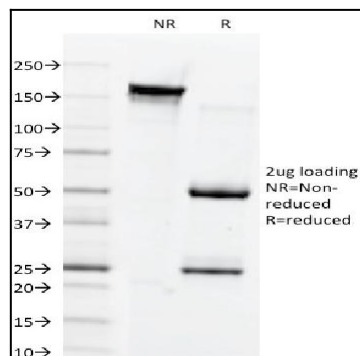


Fig. 2: SDS-PAGE Analysis Purified Connexin 32 Mouse Monoclonal Antibody (Clone M12.13). Confirmation of Integrity and Purity of Antibody