

### 36-2389: Anti-Connexin 32 (Gap Junction Protein) Monoclonal Antibody(Clone: GJB1/1753)

<b>Clonality :</b>	Monoclonal
<b>Clone Name :</b>	GJB1/1753
<b>Application :</b>	IHC
<b>Reactivity :</b>	Human, Mouse, Rat
<b>Gene :</b>	GJB1
<b>Gene ID :</b>	2705
<b>Uniprot ID :</b>	P08034
<b>Alternative Name :</b>	Charcot Marie Tooth neuropathy X linked; CMTX; CMTX1; Connexin-32; Cx32; GAP junction 28kDa liver protein; Gap junction beta-1 protein; Gap junction protein beta 1 32kD; GJB1
<b>Isotype :</b>	Mouse IgG
<b>Immunogen Information :</b>	Recombinant human GJB1 protein

#### Description

This Ab recognizes a protein of 27-32kDa, identified as Connexin 32. The connexin family of proteins forms hexameric complexes called 'connexons' that facilitate movement of low molecular weight proteins between cells via gap junctions. Connexin proteins share a common topology of four transmembrane therefore, one connexin usually cannot fully substitute for another.

#### Product Info

<b>Amount :</b>	20 µg / 100 µg
<b>Content :</b>	200 µg/ml of Ab Purified from Bioreactor Concentrate by Protein G. Prepared in 10mM PBS with 0.05% BSA & 0.05% azide. Also available WITHOUT BSA & azide at 1.0mg/ml.
<b>Storage condition :</b>	Antibody with azide - store at 2 to 8°C. Antibody without azide - store at -20 to -80°C. Antibody is stable for 24 months. Non-hazardous.

#### Application Note

Immunohistochemistry (Formalin-fixed) (0.1-0.2ug/ml for 30 min at RT)(Staining of formalin-fixed tissues requires heating tissue sections in 10mM Tris with 1mM EDTA, pH 9.0, for 45 min at 95°C followed by cooling at RT for 20 minutes);

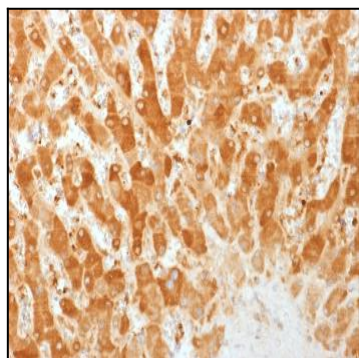


Fig. 1: Formalin-fixed, paraffin-embedded human Liver stained with Connexin 32 Monoclonal Antibody (GJB1/1753)

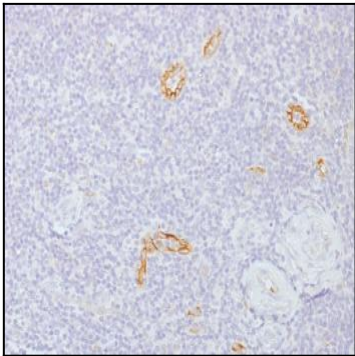


Fig. 2: Formalin-fixed, paraffin-embedded human Tonsil stained with Connexin 32 Monoclonal Antibody (GJB1/1753)