

36-2399: Anti-Lactoylglutathione Lyase Monoclonal Antibody(Clone: CPTC-GLO1-3)

Clonality :	Monoclonal
Clone Name :	CPTC-GLO1-3
Application :	WB,IHC
Reactivity :	Human
Gene :	GLO1
Gene ID :	2739
Uniprot ID :	Q04760
Alternative Name :	Aldoketomutase; epididymis secretory protein Li 74; Glo1; Glx I; glyoxalase 1 complex; glyoxalase 1 regulatory; glyoxalase 1 structural; glyoxalase domain containing 1; Glyoxalase I; glyoxylase 1; Ketone-aldehyde mutase; lactoyl glutathione lyase; Lactoylglutathione lyase; Methylglyoxalase; S-D-lactoylglutathione methylglyoxal lyase
Isotype :	Mouse IgG1
Immunogen Information :	Recombinant full-length human GLO1 protein

Description

GLO1 is an enzyme involved in the detoxification of methylglyoxal, a byproduct of glycolysis. GLO1 expression has been demonstrated by several studies to be upregulated in various human malignant tumors, including metastatic melanoma and lung carcinoma, and thus is a target for pharmaceutical development.

Product Info

Amount :	20 µg / 100 µg
Content :	200 µg/ml of Ab Purified from Bioreactor Concentrate by Protein A/G. Prepared in 10mM PBS with 0.05% BSA & 0.05% azide. Also available WITHOUT BSA & azide at 1.0mg/ml.
Storage condition :	Antibody with azide - store at 2 to 8°C. Antibody without azide - store at -20 to -80°C. Antibody is stable for 24 months. Non-hazardous.

Application Note

Western Blot (1-2ug/ml);Immunohistochemistry (Formalin-fixed) (1-2ug/ml for 30 min at RT)(Staining of formalin-fixed tissues requires heating tissue sections in 10mM Tris with 1mM EDTA, pH 9.0, for 45 min at 95°C followed by cooling at RT for 20 minutes);

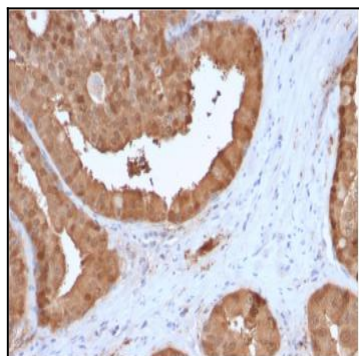


Fig. 1: Formalin-fixed, paraffin-embedded human Prostate Carcinoma stained with Lactoylglutathione Lyase Mouse Monoclonal Antibody (CPTC-GLO1-3).

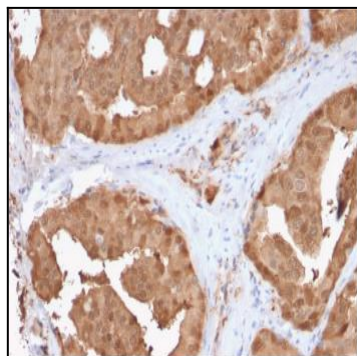


Fig. 2: Formalin-fixed, paraffin-embedded human Prostate Carcinoma stained with Lactoylglutathione Lyase Mouse Monoclonal Antibody (CPTC-GLO1-3).

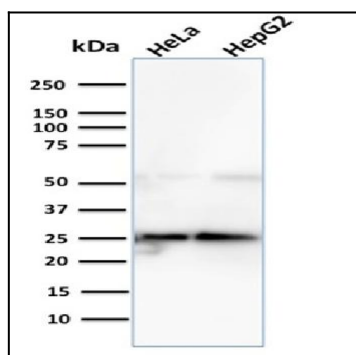


Fig. 3: Western Blot Analysis of Human HeLa and HepG2 cell lysate using Lactoylglutathione Lyase Mouse Monoclonal Antibody (CPTC-GLO1-3).

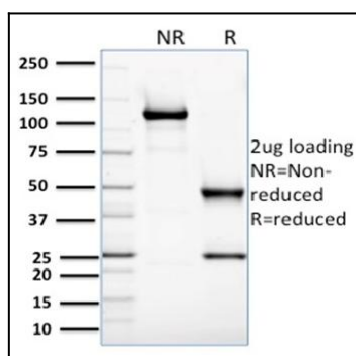


Fig. 4: SDS-PAGE Analysis Purified Lactoylglutathione Lyase Mouse Monoclonal Ab (CPTC-GLO1-3). Confirmation of Purity and Integrity of Antibody