

## 36-2416: Anti-CLEC9A / DNDR1 (Dendritic Cell Marker) Monoclonal Antibody(Clone: 8F9)

<b>Clonality :</b>	Monoclonal
<b>Clone Name :</b>	8F9
<b>Application :</b>	ELISA,FACS,IF
<b>Reactivity :</b>	Human
<b>Gene :</b>	CLEC9A
<b>Gene ID :</b>	283420
<b>Uniprot ID :</b>	Q6UXN8
<b>Alternative Name :</b>	C-type lectin domain family 9 member A (CLEC9A); DNDR1
<b>Isotype :</b>	Mouse IgG2a, kappa
<b>Immunogen Information :</b>	RBL-2H3 cells expressing human DNDR-1 fused to an HA epitope

### Description

This MAAb recognizes a protein of 27kDa, identified as CLEC9A (C-type lectin domain family 9 member A). Its epitopes maps in aa 50-110. The C-type lectin/C-type lectin-like domain (CTL/CTLD) superfamily consists of a variety of proteins that share a common protein fold and have diverse functions, including cell-cell signaling, cell adhesion, glycoprotein turnover and immune responses. CLEC-9A, also known as DNDR1 (dendritic cell natural killer lectin group receptor 1), is a 241 amino acid single-pass type II membrane protein that contains one C-type lectin domain and belongs to the CTL/CTLD superfamily. Expressed in myeloid lineage cells, brain, spleen and thymus, CLEC-9A is a group V C-type lectin- like receptor (CTLR) that acts as an activation receptor.

### Product Info

<b>Amount :</b>	20 µg / 100 µg
<b>Content :</b>	200 µg/ml of Ab Purified from Bioreactor Concentrate by Protein A/G. Prepared in 10mM PBS with 0.05% BSA & 0.05% azide. Also available WITHOUT BSA & azide at 1.0mg/ml.
<b>Storage condition :</b>	Antibody with azide - store at 2 to 8°C. Antibody without azide - store at -20 to -80°C. Antibody is stable for 24 months. Non-hazardous.

### Application Note

ELISA (For coating, order antibody without BSA);,Flow Cytometry (1-2ug/million cells); Immunofluorescence (1-2ug/ml); ,

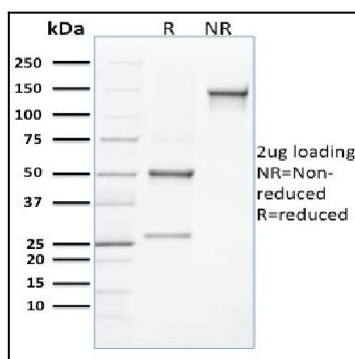


Fig. 1: SDS-PAGE Analysis Purified CLEC9A Mouse Monoclonal Antibody (8F9). Confirmation of Integrity and Purity of Antibody.