

36-2419: Anti-CD13 / Aminopeptidase-N (Myeloid Cell Marker) Monoclonal Antibody(Clone: WM15)

Clonality :	Monoclonal
Clone Name :	WM15
Application :	FACS,IF,IHC
Reactivity :	Human
Gene :	ANPEP
Gene ID :	290
Uniprot ID :	P15144
Alternative Name :	Alanyl aminopeptidase; Aminopeptidase M; Aminopeptidase N; ANPEP; AP-M; APN; gp150; hAPN; Lap1; Microsomal aminopeptidase; Myeloid plasma membrane glycoprotein CD13; p150; PEPN
Isotype :	Mouse IgG1, kappa
Immunogen Information :	Human AML cells

Description

Recognizes an integral membrane glycoprotein of 150kDa, identified as CD13 (also known as aminopeptidase-N). The antibody recognizes an extracellular epitope. The CD13 antigen is present on most cells of myeloid origin including granulocytes, monocytes, mast cells, and GM-progenitor cells. It is also expressed by the majority of AML, CML in myeloid blast crisis, and in a smaller fraction of lymphoid leukemias. CD13 is absent from normal lymphocytes, platelets and erythrocytes. CD13 is also present on fibroblasts; endothelial cells, epithelial cells from renal proximal tubules and intestinal brush border, bone marrow stromal cells, osteoclasts, and cells lining bile duct canaliculi. CD13 is identical to aminopeptidase N (APN), a prominent membrane-bound metalloprotease present on the surface of intestinal brush border and renal tubules. CD13 plays a role in metabolism of biologically active peptides, in phagocytosis, and in bactericidal/tumoricidal activities. It also serves as a receptor for human coronaviruses (HCV). The lineage-restricted pattern of expression of CD13 within the hemopoietic compartment suggests that it may be important in myeloid cell differentiation.

Product Info

Amount :	20 µg / 100 µg
Content :	200 µg/ml of Ab Purified from Bioreactor Concentrate by Protein A/G. Prepared in 10mM PBS with 0.05% BSA & 0.05% azide. Also available WITHOUT BSA & azide at 1.0mg/ml.
Storage condition :	Antibody with azide - store at 2 to 8°C. Antibody without azide - store at -20 to -80°C. Antibody is stable for 24 months. Non-hazardous.

Application Note

Flow Cytometry (1-2ug/million cells); ,Immunofluorescence (1-2ug/ml); ,Immunohistochemistry (Frozen) (0.5-1ug/ml for 30 minutes at RT),

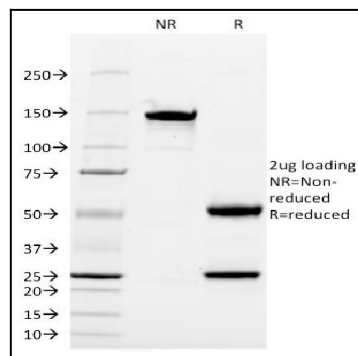


Fig. 1: SDS-PAGE Analysis Purified CD13 Mouse Monoclonal Antibody (WM15).
Confirmation of Integrity and Purity of Antibody.