

36-2425: Anti-Galectin-13 (GAL13) / Placental Protein 13 (PP13) Monoclonal Antibody(Clone: PP13/1165)

| | |
|--------------------------------|--|
| Clonality : | Monoclonal |
| Clone Name : | PP13/1165 |
| Application : | ELISA,IHC |
| Reactivity : | Human |
| Gene : | LGALS13 |
| Gene ID : | 29124 |
| Uniprot ID : | Q9UHV8 |
| Alternative Name : | Gal-13; GAL13; Galactoside-binding soluble lectin 13; Galectin-13; Galectin13; Lectin galactoside binding soluble 13; LGALS13; PLAC8; Placental protein 13 (PP13); Placental tissue protein 13 |
| Isotype : | Mouse IgG2b, kappa |
| Immunogen Information : | Recombinant human Galectin-13 protein fragment (aa23-134) |

Description

It recognizes a 32kDa protein, which is identified as homodimer of galectin-13 (also known as PP13). Galectins are a family of soluble -galactoside-binding lectins that modulate cell-to-cell adhesion and cell-to-extracellular matrix (ECM) interactions and play a role in tumor progression, pre-mRNA splicing and apoptosis. One such member, galectin-13, is a 139 amino acid protein that contains one galectin domain. Possessing lysophospholipase activity, galectin-13 exists as a disulfide-linked homodimer. Galectin-13 is suggested to have a developmental role in the placenta and may display immunobiological activity in fetomaternal blood-spaces. Screening for galectin-13 in maternal serum during the first trimester of pregnancy may serve as a diagnostic marker to predict preterm pre-eclampsia.

Product Info

| | |
|----------------------------|---|
| Amount : | 20 µg / 100 µg |
| Content : | 200 µg/ml of Ab Purified from Bioreactor Concentrate by Protein A/G. Prepared in 10mM PBS with 0.05% BSA & 0.05% azide. Also available WITHOUT BSA & azide at 1.0mg/ml. |
| Storage condition : | Antibody with azide - store at 2 to 8°C. Antibody without azide - store at -20 to -80°C. Antibody is stable for 24 months. Non-hazardous. |

Application Note

ELISA (For coating, order Ab without BSA); Immunohistochemistry (Formalin-fixed) (1-2ug/ml for 30 minutes at RT)(Staining of formalin-fixed tissues requires heating tissue sections in 10mM Tris with 1mM EDTA, pH 9.0, for 45 min at 95°C followed by cooling at RT for 20 minutes);

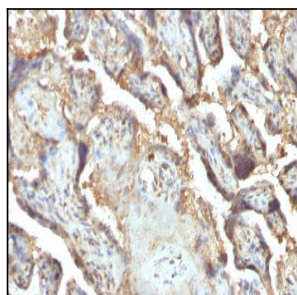


Fig. 1: Formalin-fixed, paraffin-embedded human Placenta stained with Galectin-13 / PP13 Monoclonal Antibody (PP13/1165)

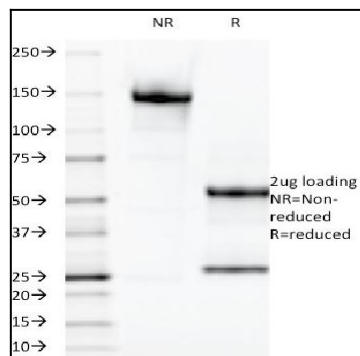


Fig. 2: SDS-PAGE Analysis Purified Galectin-13 / PP13 Monoclonal Antibody (PP13/1165). Confirmation of Purity and Integrity of Antibody.