

36-2426: Anti-PD-L1 / PDCD1LG1 / CD274 / B7-H1 (Cancer Immunotherapy Target) Monoclonal Antibody(Clone: PDL1/2741)

Clonality :	Monoclonal
Clone Name :	PDL1/2741
Application :	ELISA
Reactivity :	Human
Gene :	CD274
Gene ID :	29126
Uniprot ID :	Q9NZQ7
Alternative Name :	B7 homolog 1; B7-H1; CD274; PD-L1; PDCD1 ligand 1; PDCD1L1; PDCD1LG1; Programmed cell death 1 ligand 1
Isotype :	Mouse IgG1, kappa
Immunogen Information :	Recombinant fragment of human CD274 protein (around aa39-191) (exact sequence is proprietary)

Description

PD-L1 is a checkpoint regulator in immune cells, it is expressed on immune or non-hematopoietic cells. Expression of the protein is seen during pregnancy where it has a role in suppressing the immune system. PD-L1 induces an inhibitory signal in activated T-cells and promotes T-cell apoptosis. It is overexpressed in a number of different cancers where it is believed to play a significant role in the cancer's ability to evade the immune system.

Product Info

Amount :	20 µg / 100 µg
Content :	200 µg/ml of Ab Purified from Bioreactor Concentrate by Protein A/G. Prepared in 10mM PBS with 0.05% BSA & 0.05% azide. Also available WITHOUT BSA & azide at 1.0mg/ml.
Storage condition :	Antibody with azide - store at 2 to 8°C. Antibody without azide - store at -20 to -80°C. Antibody is stable for 24 months. Non-hazardous.

Application Note

ELISA (For coating, order antibody without BSA); ,

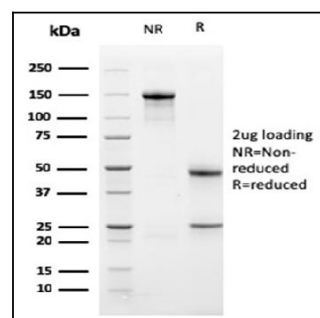
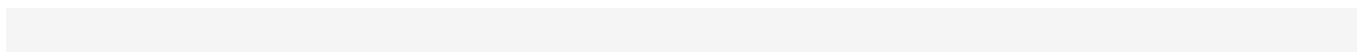


Fig. 1: SDS-PAGE Analysis Purified TCF4 Mouse Monoclonal Antibody (PDL1/2741). Confirmation of Purity and Integrity of Antibody.

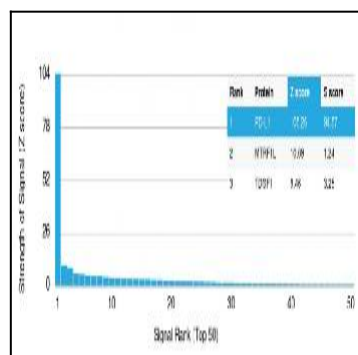


Fig. 2: Analysis of Protein Array containing more than 19,000 full-length human proteins using PD-L1 Mouse Monoclonal Antibody (PDL1/2741). Z- and S- Score: The Z-score represents the strength of a signal that a monoclonal antibody (Monoclonal Antibody) (in combination with a fluorescently-tagged anti-IgG secondary antibody) produces when binding to a particular protein on the HuProt™ array. Z-scores are described in units of standard deviations (SD's) above the mean value of all signals generated on that array. If targets on HuProt™ are arranged in descending order of the Z-score, the S-score is the difference (also in units of SD's) between the Z-score. S-score therefore represents the relative target specificity of a Monoclonal Antibody to its intended target. A Monoclonal Antibody is considered to specific to its intended target, if the Monoclonal Antibody has an S-score of at least 2.5. For example, if a Monoclonal Antibody binds to protein X with a Z-score of 43 and to protein Y with a Z-score of 14, then the S-score for the binding of that Monoclonal Antibody to protein X is equal to 29.