

36-2431: Anti-PD-L1 / PDCD1LG1 / CD274 / B7-H1 (Cancer Immunotherapy Target) Monoclonal Antibody(Clone: PDL1/2746)

Clonality :	Monoclonal
Clone Name :	PDL1/2746
Application :	ELISA,IHC,FACS,WB,IF
Reactivity :	Human
Gene :	CD274
Gene ID :	29126
Uniprot ID :	Q9NZQ7
Alternative Name :	B7 homolog 1; B7-H1; CD274; PD-L1; PDCD1 ligand 1; PDCD1L1; PDCD1LG1; Programmed cell death 1 ligand 1
Isotype :	Mouse IgG2b, kappa
Immunogen Information :	Recombinant fragment (around aa 39-191) of human CD274 (PD-L1) protein (exact sequence is proprietary)

Description

PD-L1 is a checkpoint regulator in immune cells, it is expressed on immune or non-hematopoietic cells. Expression of the protein is seen during pregnancy where it has a role in suppressing the immune system. PD-L1 induces an inhibitory signal in activated T-cells and promotes T-cell apoptosis. It is overexpressed in a number of different cancers where it is believed to play a significant role in the cancer's ability to evade the immune system.

Product Info

Amount :	20 µg / 100 µg
Content :	200 µg/ml of Ab Purified from Bioreactor Concentrate by Protein A/G. Prepared in 10mM PBS with 0.05% BSA & 0.05% azide. Also available WITHOUT BSA & azide at 1.0mg/ml.
Storage condition :	Antibody with azide - store at 2 to 8°C. Antibody without azide - store at -20 to -80°C. Antibody is stable for 24 months. Non-hazardous.

Application Note

ELISA (For coating, order antibody without BSA); Western Blot (1-2ug/ml);,Flow Cytometry (1-2ug/million cells); Immunofluorescence (1-2ug/ml);,Immunohistochemistry (Formalin-fixed) (1-2ug/ml for 30 minutes at RT),(Staining of formalin-fixed tissues requires heating tissue sections in 10mM Tris with 1mM EDTA, pH 9.0, for 45 min at 95°C followed by cooling at RT for 20 minutes);

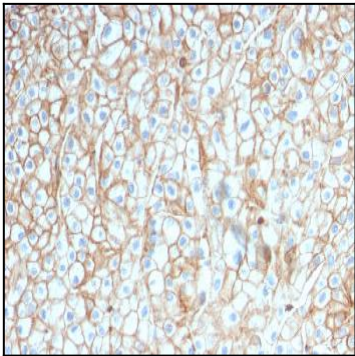


Fig. 1: Formalin-fixed, paraffin-embedded human Lung SCC stained with PD-L1-Monospecific Mouse Monoclonal Antibody (PDL1/2746).

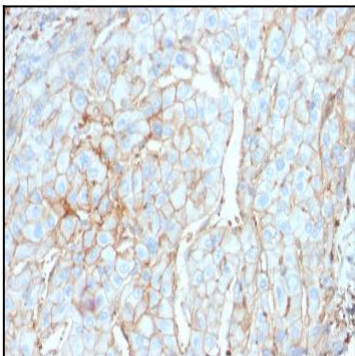


Fig. 2: Formalin-fixed, paraffin-embedded human Cervical Carcinoma stained with PD-L1-Monospecific Mouse Monoclonal Antibody (PDL1/2746).

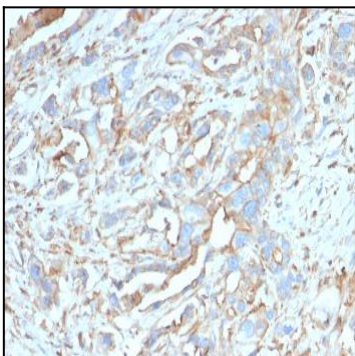


Fig. 3: Formalin-fixed, paraffin-embedded human Breast Carcinoma stained with PD-L1-Monospecific Mouse Monoclonal Antibody (PDL1/2746).

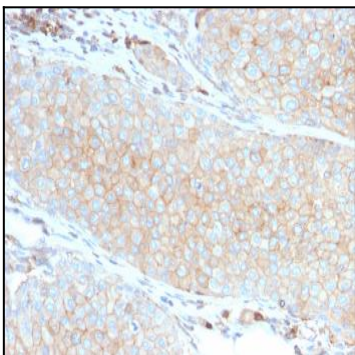


Fig. 4: Formalin-fixed, paraffin-embedded human Basal Cell Carcinoma stained with PD-L1-Monospecific Mouse Monoclonal Antibody (PDL1/2746).

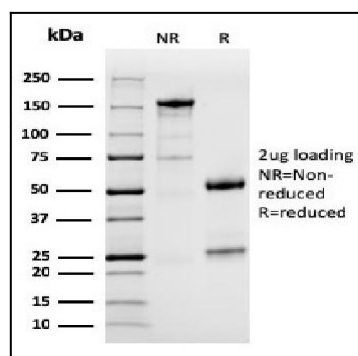


Fig. 5: SDS-PAGE Analysis of Purified PD-L1 Mouse Monoclonal Antibody (PDL1/2746). Confirmation of Purity and Integrity of Antibody.

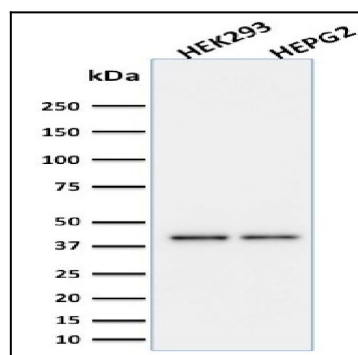


Fig. 6: Western Blot Analysis of HEK293 and HepG2 cell lysates using PD-L1 Mouse Monoclonal Antibody (PDL1/2746).

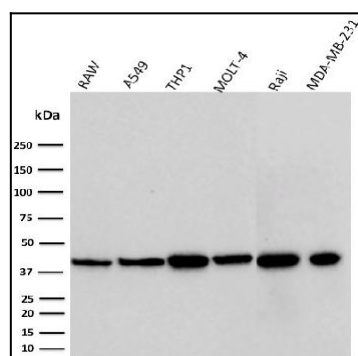


Fig. 7: Western Blot Analysis of RAW, A549, THP1, MOLT-4, Raji, and MDA-MB-231 cell lysates using PD-L1 Mouse Monoclonal Antibody (PDL1/2746).