

36-2455: Anti-Histone H1 (Pan Nuclear Marker) Monoclonal Antibody(Clone: HH1/1784R)

Clonality :	Monoclonal
Clone Name :	HH1/1784R
Application :	WB,FACS,IF,IHC
Reactivity :	Human, Mouse, Rat
Gene :	H1
Gene ID :	3005
Alternative Name :	HANP1; His1; HisC; HIST1; HIST1H1A; HIST1H1B; HIST1H1C; HIST1H1D; HIST1H1E; HIST1H1T; Oocyte-specific histone H1; Testicular H1 histone
Isotype :	Rabbit IgG
Immunogen Information :	Recombinant full-length human Histone H1 protein

Description

Eukaryotic histones are basic and water-soluble nuclear proteins that form hetero-octameric nucleosome particles by wrapping 146 base pairs of DNA in a left-handed super-helical turn sequentially to form chromosomal fiber. Two molecules of each of the four core histones (H2A, H2B, H3, and H4) form the octamer; formed of two H2A-H2B dimers and two H3-H4 dimers, forming two nearly symmetrical halves by tertiary structure. Over 80% of nucleosomes contain the linker Histone H1, derived from an intronless gene that interacts with linker DNA between nucleosomes and mediates compaction into higher order chromatin. Histones are subject to posttranslational modification by enzymes primarily on their N-terminal tails, but also in their globular domains. Such modifications include methylation, citrullination, acetylation, phosphorylation, sumoylation, ubiquitination and ADP-ribosylation.

Product Info

Amount :	20 µg / 100 µg
Content :	200 µg/ml of Ab Purified by Protein A. Prepared in 10mM PBS with 0.05% BSA & 0.05% azide. Also available WITHOUT BSA & azide at 1.0mg/ml.
Storage condition :	Antibody with azide - store at 2 to 8°C. Antibody without azide - store at -20 to -80°C. Antibody is stable for 24 months. Non-hazardous.

Application Note

Western Blot (1-2ug/ml); Flow Cytometry (1-2ug/million cells); Immunofluorescence (1-2ug/ml); Immunohistochemistry (Formalin-fixed) (1-2ug/ml for 30 minutes at RT) (Staining of formalin-fixed tissues requires heating tissue sections in 10mM Tris with 1mM EDTA, pH 9.0, for 45 min at 95°C followed by cooling at RT for 20 minutes);

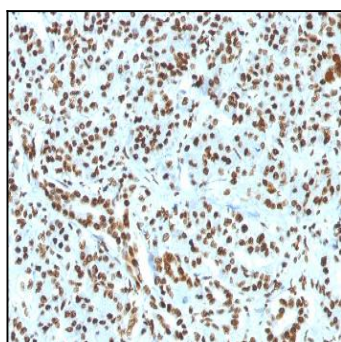


Fig. 1: Formalin-fixed, paraffin-embedded human Pancreas stained with Histone H1 Rabbit Recombinant Monoclonal Antibody (HH1/1784R).

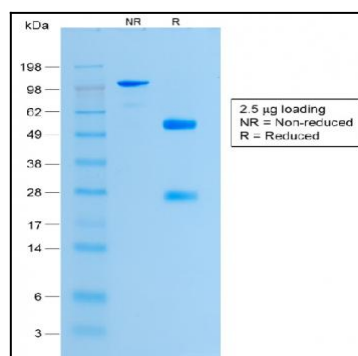


Fig. 2: SDS-PAGE Analysis Purified Histone H1 Rabbit Recombinant Monoclonal Antibody (HH1/1784R). Confirmation of Integrity and Purity of Antibody.

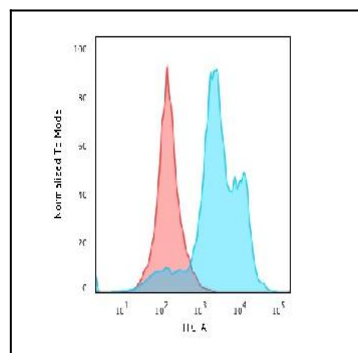


Fig. 3: Flow Cytometric Analysis of paraformaldehyde-fixed HeLa cells using Histone H1 Rabbit Recombinant Monoclonal Antibody (HH1/1784R) followed by goat anti-rabbit IgG-CF488 (Blue); Isotype Control (Red).

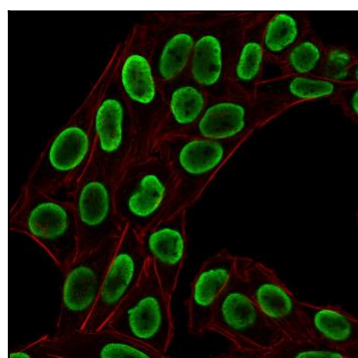


Fig. 4: Immunofluorescent staining of paraformaldehyde-fixed HeLa cells using Histone H1 Rabbit Recombinant Monoclonal Antibody (HH1/1784R) followed by goat anti-rabbit IgG-CF488 (Green). Membrane stained with Phalloidin (Red).