

## 36-2474: Anti-HLA-A (MHC I) Monoclonal Antibody(Clone: 108-2C5)

<b>Clonality :</b>	Monoclonal
<b>Clone Name :</b>	108-2C5
<b>Application :</b>	FACS,IF
<b>Reactivity :</b>	Human
<b>Gene :</b>	HLA-A
<b>Gene ID :</b>	3105
<b>Uniprot ID :</b>	P01889; P30443; P30499
<b>Alternative Name :</b>	HLA-A; HLA class 1A; MHC class I HLA-A
<b>Isotype :</b>	Mouse IgG1, kappa
<b>Immunogen Information :</b>	Normal human peripheral blood lymphocytes

### Description

HLA-A, with HLA-B and HLA-C, belongs to major histocompatibility complex (MHC) class I antigens and expresses constitutively on all nucleated cells. MHC class I antigens play a role in class I MHC-associated antigen presentation, inhibition of NK cell cytotoxicity, tumor surveillance, and tissue allotransplantation. This MAb is useful for HLA molecular typing of peripheral blood leukocytes as well as a large number of leukemic cell lines. It reacts with an intralocus determinant present on a limited number of HLA-A locus-encoded gene products (HLA-A2, -A3, -A28, -A29, -A30, -A31 and -Aw33). Its epitope maps between aa65-to-aa80 of the 1 domain of the HLA-A. This MAb recognizes an intralocus determinant present on a limited number of HLA-A locus-encoded gene products (HLA-A2, -A3, A28, -A29, -A30, -A31 and -Aw33). Furthermore, by testing its reactivity with HLA-A2 natural variants and mutants, the importance of amino acid residues 79 and/or 80 of the alpha1 domain was demonstrated in the formation of an intralocus HLA-A determinant.

### Product Info

<b>Amount :</b>	20 µg / 100 µg
<b>Content :</b>	200 µg/ml of Ab Purified from Bioreactor Concentrate. Prepared in 10mM PBS with 0.05% BSA & 0.05% azide. Also available WITHOUT BSA & azide at 1.0mg/ml.
<b>Storage condition :</b>	Antibody with azide - store at 2 to 8°C. Antibody without azide - store at -20 to -80°C. Antibody is stable for 24 months. Non-hazardous.

### Application Note

Flow Cytometry (1-2ug/million cells); ,Immunofluorescence (1-2ug/ml); ,

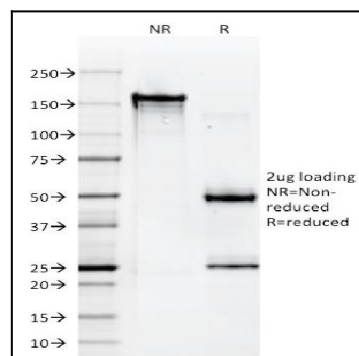


Fig. 1: SDS-PAGE Analysis Purified HLA-A Mouse Monoclonal Antibody (108-2C5). Confirmation of Purity and Integrity of Antibody.

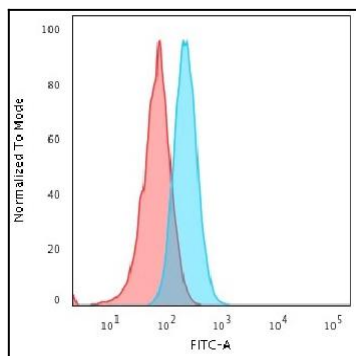


Fig. 2: Flow Cytometric Analysis of Raji cells. HLA-A Mouse Monoclonal Antibody (108-2C5) followed by goat anti-Mouse IgG-CF488 (Blue); Isotype control (Red).