

### 36-2478: Anti-HLA-DP (MHC II) Monoclonal Antibody(Clone: BRA-FB6)

<b>Clonality :</b>	Monoclonal
<b>Clone Name :</b>	BRA-FB6
<b>Application :</b>	ELISA,FACS,IF
<b>Reactivity :</b>	Human
<b>Gene :</b>	HLA-DPB1
<b>Gene ID :</b>	3115
<b>Uniprot ID :</b>	P04440
<b>Alternative Name :</b>	HLA class II histocompatibility antigen DP alpha 1 chain; HLA DP1A; HLA SB alpha chain; HLADP; HLADPA1; HLASB; HLASB histocompatibility type; Human MHC class II HLA SB alpha; Major histocompatibility complex class II DP alpha 1; MHC class II DP3 alpha; MHC class II DPA1; PLT1; Primed lymphocyte test 1
<b>Isotype :</b>	Mouse IgG2b, kappa
<b>Immunogen Information :</b>	Non-T, non-B human acute lymphoblastic leukemia REH6 cell line

#### Description

Recognizes a non-polymorphic determinant of DP-MHC class II. MHC class II antigens are transmembrane glycoproteins of non-covalently linked alpha (33-35kDa) and beta (27-30kDa) chains. It reportedly reacts with B- non-T, non-B cell lines but not with T- and myeloid cell lines and leukemias. Differential expression of MHC class II antigens on fetal and adult lymphocytes, malignant B cells appears to reflect the stage of cell differentiation which may be useful in the study of lymphoproliferative disorders.

#### Product Info

<b>Amount :</b>	20 µg / 100 µg
<b>Content :</b>	200 µg/ml of Ab Purified from Bioreactor Concentrate by Protein A/G. Prepared in 10mM PBS with 0.05% BSA & 0.05% azide. Also available WITHOUT BSA & azide at 1.0mg/ml.
<b>Storage condition :</b>	Antibody with azide - store at 2 to 8°C. Antibody without azide - store at -20 to -80°C. Antibody is stable for 24 months. Non-hazardous.

#### Application Note

ELISA (For coating use Ab at 2-4ug/ml, order Ab without BSA); Flow Cytometry (1-2ug/million cells); Immunofluorescence (1-2ug/ml);

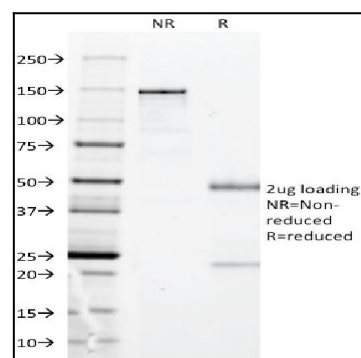


Fig. 1: SDS-PAGE Analysis Purified HLA-DP Mouse Monoclonal Antibody (BRA-FB6). Confirmation of Integrity and Purity of Antibody.

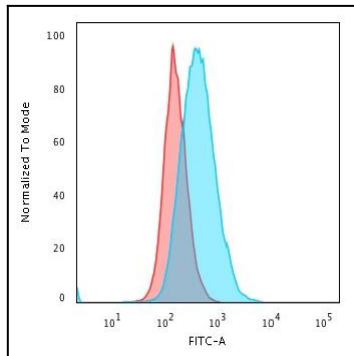


Fig. 2: Flow Cytometric Analysis of PFA-fixed Raji cells. HLA-DP Mouse Monoclonal Antibody (BRA-FB6) followed by Goat anti-Mouse IgG-CF488 (Blue); Isotype Control (Red).