

36-2577: Anti-Lambda Light Chain (B-Cell Marker) Monoclonal Antibody(Clone: rLLC/1738)

Clonality :	Monoclonal
Clone Name :	rLLC/1738
Application :	IHC
Reactivity :	Human
Gene :	IGL
Gene ID :	3535; 3546
Uniprot ID :	P01701; P01842
Alternative Name :	Bence Jones Protein; BJP; IGLC 1/2/3; Mcg Marker; Paraprotein
Isotype :	Mouse/ IgG1, kappa
Immunogen Information :	Purified human lambda light chain

Description

This MAb is specific to lambda light chain of immunoglobulin and shows no cross-reaction with lambda light chain or any of the five heavy chains. In mammals, the two light chains in an antibody are always identical, with only one type of light chain, kappa or lambda. The ratio of Kappa to Lambda is 70:30. However, with the occurrence of multiple myeloma or other B-cell malignancies this ratio is disturbed. Antibody to the lambda light chain is reportedly useful in the identification of leukemias, plasmacytomas, and certain non-Hodgkin's lymphomas. Demonstration of clonality in lymphoid infiltrates indicates that the infiltrate is malignant.

Product Info

Amount :	20 µg / 100 µg
Content :	200 µg/ml of Ab Purified from Bioreactor Concentrate by Protein A/G. Prepared in 10mM PBS with 0.05% BSA & 0.05% azide. Also available WITHOUT BSA & azide at 1.0mg/ml.
Storage condition :	Antibody with azide - store at 2 to 8°C. Antibody without azide - store at -20 to -80°C. Antibody is stable for 24 months. Non-hazardous.

Application Note

Immunohistochemistry (Formalin-fixed) (1-2ug/ml for 30 minutes at RT),(Staining of formalin-fixed tissues requires heating tissue sections in 10mM Tris with 1mM EDTA, pH 9.0, for 45 min at 95 °C followed by cooling at RT for 20 minutes),

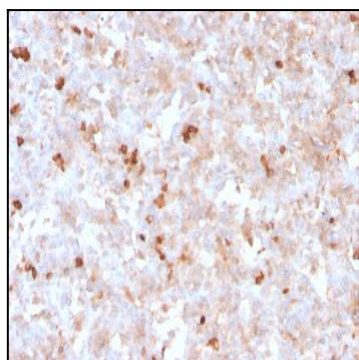


Fig. 1: Formalin-fixed, paraffin-embedded human tonsil stained with Lambda Light Chain Recombinant Mouse Monoclonal Antibody (rLLC/1738).

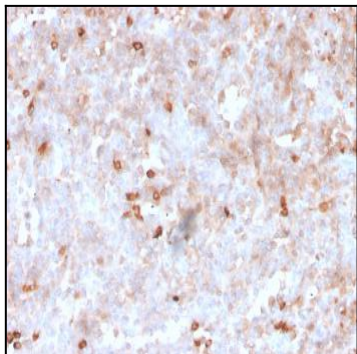


Fig. 2: Formalin-fixed, paraffin-embedded human tonsil stained with Lambda Light Chain Recombinant Mouse Monoclonal Antibody (rLLC/1738).

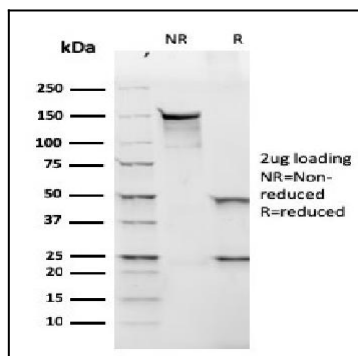


Fig. 3: SDS-PAGE Analysis Purified Lambda Light Chain Recombinant Mouse Monoclonal Antibody (rLLC/1738). Confirmation of Purity and Integrity of Antibody.