



### 36-2603: Anti-CD11a / Integrin L / LFA-1 Chain Monoclonal Antibody(Clone: CRIS-3)

<b>Clonality :</b>	Monoclonal
<b>Clone Name :</b>	CRIS-3
<b>Application :</b>	FACS,IF
<b>Reactivity :</b>	Human
<b>Gene :</b>	ITGAL
<b>Gene ID :</b>	3683
<b>Uniprot ID :</b>	P20701
<b>Alternative Name :</b>	Antigen CD11A (p180), lymphocyte function associated antigen 1, alpha polypeptide; Integrin alpha-L; ITGAL; Leukocyte Adhesion Glycoprotein LFA1 Alpha Chain; LFA 1 alpha (LFA1A); Ly15; Ly21; p180
<b>Isotype :</b>	Mouse IgG2b, kappa
<b>Immunogen Information :</b>	Stimulated human leukocytes

#### Description

Recognizes a protein of 180kDa, identified as CD11a (Leucocyte Workshop II; Code N202). CD11a complex with the 2 subunit of the integrin family, CD18, to form the cell surface heterodimer, LFA-1 or CD11a /C18 (aLbL). LFA-1 is expressed on all leukocytes including lymphocytes, monocytes, and granulocytes. It is involved in leukocyte adhesion to its ligands including intercellular adhesion molecule-1 (ICAM-1 or CD54), ICAM-2 (CD102), ICAM-3 (CD50) and Telencephalin (TLN) and play a role in most immune/inflammatory responses.

#### Product Info

<b>Amount :</b>	20 µg / 100 µg
<b>Content :</b>	200 µg/ml of Ab Purified from Bioreactor Concentrate by Protein A/G. Prepared in 10mM PBS with 0.05% BSA & 0.05% azide. Also available WITHOUT BSA & azide at 1.0mg/ml.
<b>Storage condition :</b>	Antibody with azide - store at 2 to 8°C. Antibody without azide - store at -20 to -80°C. Antibody is stable for 24 months. Non-hazardous.

#### Application Note

Flow Cytometry (1-2ug/million cells); Immunofluorescence (1-2ug/ml) Functional Studies (Order Ab without BSA & Azide);

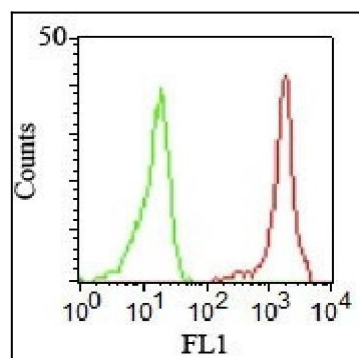


Fig. 1: Flow Cytometric staining of human PBMCs. CD11a Mouse Monoclonal Antibody (CRIS-3).

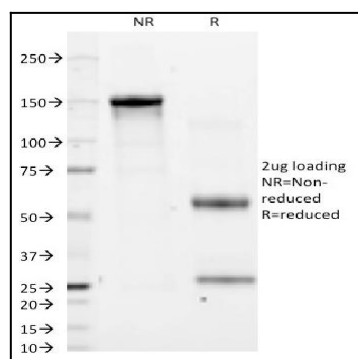


Fig. 2: SDS-PAGE Analysis Purified CD11a Mouse Monoclonal Antibody (CRIS-3).  
Confirmation of Integrity and Purity of Antibody