

36-2629: Anti-Catenin, gamma (Cardiomyocyte Marker) Monoclonal Antibody(Clone: 11E4)

Clonality :	Monoclonal
Clone Name :	11 E 4
Application :	FACS,WB,IF
Reactivity :	Human
Gene :	JUP
Gene ID :	3728
Uniprot ID :	P14923
Alternative Name :	ARVD12; Catenin (cadherin-associated protein), gamma 80kDa; Catenin gamma; CTNNG; Desmoplakin III; Desmoplakin-3; DP3; DP11; Junction Plakoglobin; PDGB; PKGB
Isotype :	Mouse IgG1, kappa
Immunogen Information :	Recombinant full length human plakoglobin, fused to maltose binding protein

Description

It recognizes a protein of 80-87kDa, identified as gamma-catenin. The catenins (, , and) are ubiquitously expressed, cytoplasmic proteins that associate with E-cadherin at cellular junctions. Catenin/cadherin complexes play an important role in mediating cellular adhesion. T-catenin, also referred to as VR22, is a 895-amino acid protein that is most abundantly expressed in cardio-myocytes and in the peritubular myoid cells of the testis. T-catenin binds to E-catenin as well as to -catenin, and it functions to inhibit Wnt signaling. CTNNA3, the gene that encodes for -T-catenin, is located on chromosome 10, and mutations in this gene show a strong correlation to late-onset Alzheimer s disease (LOAD) as well as to dilated cardiomyopathy.

Product Info

Amount :	20 µg / 100 µg
Content :	200 µg/ml of Ab Purified from Bioreactor Concentrate by Protein A/G. Prepared in 10mM PBS with 0.05% BSA & 0.05% azide. Also available WITHOUT BSA & azide at 1.0mg/ml.
Storage condition :	Antibody with azide - store at 2 to 8°C. Antibody without azide - store at -20 to -80°C. Antibody is stable for 24 months. Non-hazardous.

Application Note

Flow Cytometry (1-2ug/million cells); ,Immunofluorescence (1-2ug/ml); ,Western Blot (1-2ug/ml);,

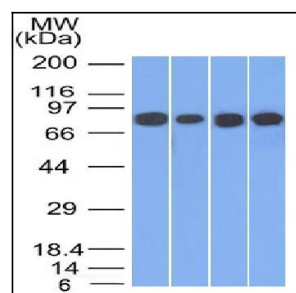


Fig. 1: Western Blot of HT20, A549, 293 and A431 cell lysates using C Catenin, gamma Mouse Monoclonal Antibody (11E4).

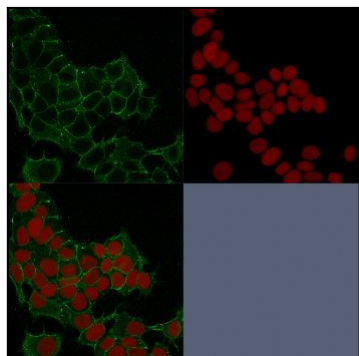


Fig. 2: Confocal immunofluorescence image of HeLa cells using Catenin, gamma Mouse Monoclonal Antibody (11E4) Green (CF488) and Reddot is used to label the nuclei Red.

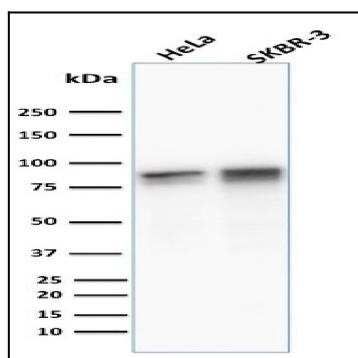


Fig. 3: Western Blot Analysis of human HeLa and SKBR3 cell lysate using Catenin, gamma Mouse Monoclonal Antibody (11E4)

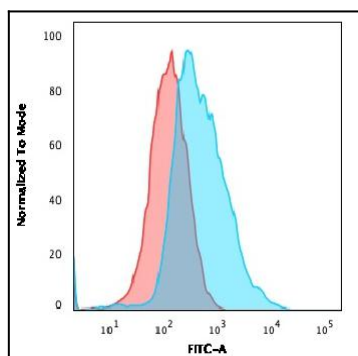


Fig. 4: Flow Cytometric Analysis of PFA-fixed MCF cells. Catenin, gamma Mouse Monoclonal Antibody (11E4) followed by goat anti-Mouse IgG-CF488 (Blue); Isotype Control (Red).