

## 36-2634: Anti-Catenin, gamma (Cardiomyocyte Marker) Monoclonal Antibody(Clone: CTNG/2155R)

<b>Clonality :</b>	Monoclonal
<b>Clone Name :</b>	CTNG/2155R
<b>Application :</b>	ELISA, FACS, IF, WB
<b>Reactivity :</b>	Human, Mouse, Rat
<b>Gene :</b>	JUP
<b>Gene ID :</b>	3728
<b>Uniprot ID :</b>	P14923
<b>Alternative Name :</b>	ARVD12; Catenin (cadherin-associated protein), gamma 80kDa; Catenin gamma; CTNNG; Desmoplakin III; Desmoplakin-3; DP3; DP11; Junction Plakoglobin; PDGB; PKGB
<b>Isotype :</b>	Rabbit IgG
<b>Immunogen Information :</b>	Recombinant, human full-length Catenin gamma (CTNG) protein

### Description

It recognizes a protein of 80-87kDa, identified as gamma-catenin. The catenins (-T-catenin, is located on chromosome 10, and mutations in this gene show a strong correlation to late-onset Alzheimer's disease (LOAD) as well as to dilated cardiomyopathy.

### Product Info

<b>Amount :</b>	20 µg / 100 µg
<b>Content :</b>	200 µg/ml of Ab Purified from Bioreactor Concentrate by Protein A/G. Prepared in 10mM PBS with 0.05% BSA & 0.05% azide. Also available WITHOUT BSA & azide at 1.0mg/ml.
<b>Storage condition :</b>	Antibody with azide - store at 2 to 8°C. Antibody without azide - store at -20 to -80°C. Antibody is stable for 24 months. Non-hazardous.

### Application Note

ELISA (For coating, order Ab without BSA); Flow Cytometry (1-2ug/million cells); Immunofluorescence (1-2ug/ml); Western Blot (1-2ug/ml);

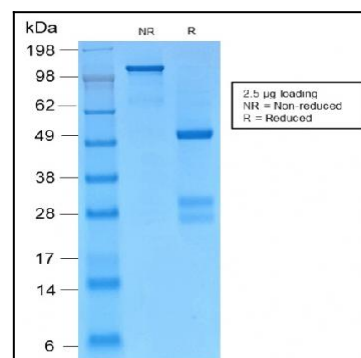


Fig. 1: SDS-PAGE Analysis Purified Catenin, gamma Rabbit Monoclonal Antibody (CTNG/2155R). Confirmation of Purity and Integrity of Antibody.