

## 36-2646: Anti-Cytokeratin 1 (Suprabasal Keratinocyte Marker) Monoclonal Antibody(Clone: LHK1)

|                                |   |
|--------------------------------|---|
| <b>Clonality :</b>             | Monoclonal  |
| <b>Clone Name :</b>            | LHK1  |
| <b>Application :</b>           | IHC   |
| <b>Reactivity :</b>            | Human, Rat  |
| <b>Gene :</b>                  | KRT1  |
| <b>Gene ID :</b>               | 38748   |
| <b>Uniprot ID :</b>            | P04264  |
| <b>Alternative Name :</b>      | 67kDa Cytokeratin; CK1; Cytokeratin-1; EHK1; Epidermolytic hyperkeratosis 1; EPPK; K1; Keratin Type II Cytoskeletal 1; Keratin-1; KRT1; KRT1A; NEPPK; Type II cytoskeletal 1; Type-II keratin Kb1 |
| <b>Isotype :</b>               | Mouse IgG2a, kappa  |
| <b>Immunogen Information :</b> | A 13-amino acid peptide (VRFVSTSYSGVTR) from the C-terminus of human KRT1 protein   |

### Description

Keratins are a family of intermediate filament proteins that assemble into filaments through forming heterodimers of one type I keratin (keratins 9 to 23) and one type II keratin (keratins 1 to 8). Keratins demonstrate tissue and differentiation specific expression profiles. Cytokeratin 1 is a hetero-tetramer of two type I as well as two type II keratins, keratin-10 (KRT10). Keratin 1 is differentiation specific keratin that is one of the predominant keratins in suprabasal keratinocytes in stratified epithelia. Mutations in keratin 1 cause epidermolytic hyperkeratosis.

### Product Info

|                            |   |
|----------------------------|---|
| <b>Amount :</b>            | 20 µg / 100 µg  |
| <b>Content :</b>           | 200 µg/ml of Ab Purified from Bioreactor Concentrate by Protein A/G. Prepared in 10mM PBS with 0.05% BSA & 0.05% azide. Also available WITHOUT BSA & azide at 1.0mg/ml. |
| <b>Storage condition :</b> | Antibody with azide - store at 2 to 8°C. Antibody without azide - store at -20 to -80°C. Antibody is stable for 24 months. Non-hazardous.                               |

### Application Note

Immunohistochemistry (Formalin-fixed) (0.1-0.2µg/ml for 30 min at RT)(Staining of formalin-fixed tissues requires heating tissue sections in 10mM Tris with 1mM EDTA, pH 9.0, for 45 min at 95°C followed by cooling at RT for 20 minutes);

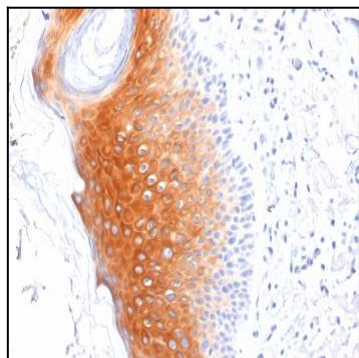


Fig. 1: Formalin-fixed, paraffin-embedded human Skin stained with Cytokeratin 1 Mouse Monoclonal Antibody (LHK1).

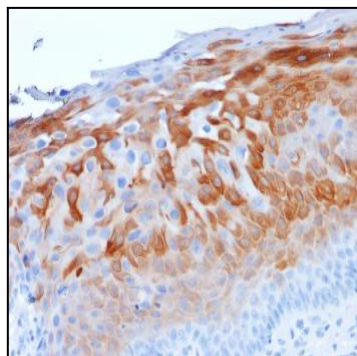


Fig. 2: Formalin-fixed, paraffin-embedded human Cervix stained with Cytokeratin 1 Mouse Monoclonal Antibody (LHK1).

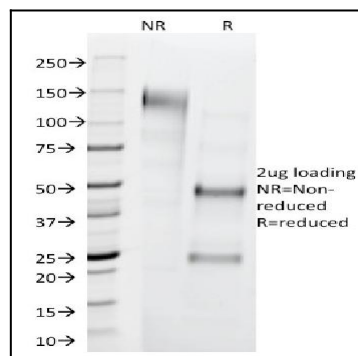


Fig. 3: SDS-PAGE Analysis Purified Cytokeratin 1 Mouse Monoclonal Antibody (LHK1). Confirmation of Integrity and Purity of Antibody.