

36-2650: Anti-Cytokeratin 5 (KRT5) (Basal, Myoepithelial & Mesothelial Cell Marker) Monoclonal Antibody(Clone: KRT5/2080)

Clonality :	Monoclonal
Clone Name :	KRT5/2080
Application :	IHC
Reactivity :	Human
Gene :	KRT5
Gene ID :	3852
Uniprot ID :	P13647
Alternative Name :	58kDa Cytokeratin; CK5; Cytokeratin-5; DDD1; Epidermolysis Bullosa Simplex 2 (EBS2); Keratin 5; Keratin, Type II Cytoskeletal 5; Keratin-5; KRT5; Type-II Cytoskeletal 5; Type-II keratin Kb5
Isotype :	Mouse IgG1, kappa
Immunogen Information :	Recombinant human Cytokeratin 5 (KRT5) protein fragment (around aa 318-491) (exact sequence is proprietary)

Description

This MAb recognizes a protein of 58kDa, which is identified as Cytokeratin 5 (KRT5). This type II cytokeratin is specifically expressed in the basal layer of the epidermis with family member KRT14. Antibodies to KRT5 identify basal cells of squamous and glandular epithelia, myoepithelia, and mesothelium. Anti-cytokeratin 5 has been reported useful in the differential diagnosis of metastatic carcinoma in the pleura versus epithelioid mesothelioma. Almost all squamous cell carcinomas, half of transitional carcinomas, and many undifferentiated large cell carcinomas express. Anti-KRT5, along with anti-p63, affords a high sensitivity and specificity for squamous differentiation. Myoepithelial cells of the breast, glandular epithelia, and basal cells of the prostate are labeled with anti-KRT5.

Product Info

Amount :	0.1 ml / 0.5 ml
Content :	Tissue culture supernatant with 0.05% Azide. Contact us if you require it in a different format.
Storage condition :	Store at 2 to 8°C. Antibody is stable for 24 months. Non-hazardous.

Application Note

Immunohistochemistry (Formalin-fixed) (1:50-1:100 for 30 minutes at RT) (Staining of formalin-fixed tissues requires heating tissue sections in 10mM Tris with 1mM EDTA, pH 9.0, for 45 min at 95°C followed by cooling at RT for 20 minutes);

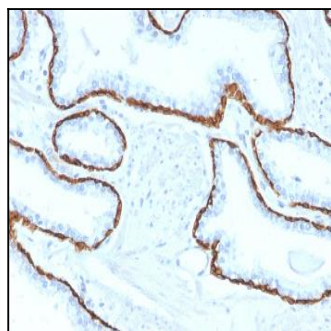


Fig. 1: Formalin-fixed, paraffin-embedded human Prostate Carcinoma stained with Cytokeratin 5 (KRT5) Mouse Monoclonal Antibody (KRT5/2080).

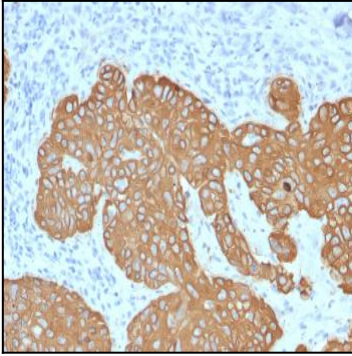


Fig. 2: Formalin-fixed, paraffin-embedded human Basal Cell Carcinoma stained with Cytokeratin 5 (KRT5) Mouse Monoclonal Antibody (KRT5/2080).