

## 36-2651: Anti-Cytokeratin 5 (KRT5) (Basal, Myoepithelial & Mesothelial Cell Marker) Monoclonal Antibody (Clone: KRT5/3594)

<b>Clonality :</b>	Monoclonal
<b>Clone Name :</b>	KRT5/3594
<b>Application :</b>	IHC
<b>Reactivity :</b>	Human
<b>Gene :</b>	KRT5
<b>Gene ID :</b>	3852
<b>Uniprot ID :</b>	P13647
<b>Alternative Name :</b>	58kDa Cytokeratin; DDD1; Epidermolysis Bullosa Simplex 2 (EBS2); Keratin 5; Keratin, Type II Cytoskeletal 5; Keratin-5; Type-II Cytoskeletal 5; Type-II keratin Kb5
<b>Isotype :</b>	Mouse IgG1, kappa
<b>Immunogen Information :</b>	Recombinant fragment (around aa 316-590) of human Cytokeratin 5 (KRT5) protein (exact sequence is proprietary)

### Description

This MAbs recognizes a protein of 58kDa, which is identified as Cytokeratin 5 (KRT5). This type II cytokeratin is specifically expressed in the basal layer of the epidermis with family member KRT14. Antibodies to KRT5 identify basal cells of squamous and glandular epithelia, myoepithelia, and mesothelium. Anti-cytokeratin 5 has been reported useful in the differential diagnosis of metastatic carcinoma in the pleura versus epithelioid mesothelioma. Almost all squamous cell carcinomas, half of transitional carcinomas, and many undifferentiated large cell carcinomas express. Anti-KRT5, along with anti-p63, affords a high sensitivity and specificity for squamous differentiation. Myoepithelial cells of the breast, glandular epithelia, and basal cells of the prostate are labeled with anti-KRT5.

### Product Info

<b>Amount :</b>	20 µg / 100 µg
<b>Content :</b>	200 µg/ml of Ab Purified from Bioreactor Concentrate by Protein A/G. Prepared in 10mM PBS with 0.05% BSA & 0.05% azide. Also available WITHOUT BSA & azide at 1.0mg/ml.
<b>Storage condition :</b>	Antibody with azide - store at 2 to 8°C. Antibody without azide - store at -20 to -80°C. Antibody is stable for 24 months. Non-hazardous.

### Application Note

Immunohistochemistry (Formalin-fixed) (1-2µg/ml for 30 minutes at RT), (Staining of formalin-fixed tissues requires heating tissue sections in 10mM Tris with 1mM EDTA, pH 9.0, for 45 min at 95 &degC followed by cooling at RT for 20 minutes),



Fig. 1: Formalin-fixed, paraffin-embedded human Prostate Carcinoma stained with Cytokeratin 5 Mouse Monoclonal Antibody (KRT5/3594).

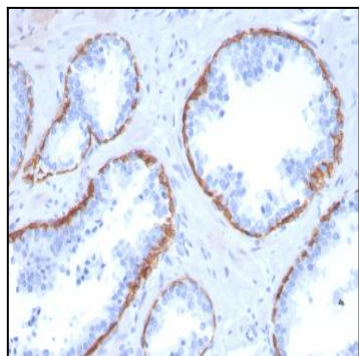


Fig. 2: Formalin-fixed, paraffin-embedded human Prostate Carcinoma stained with Cytokeratin 5 Mouse Monoclonal Antibody (KRT5/3594).

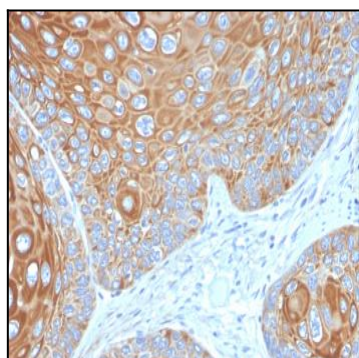


Fig. 3: Formalin-fixed, paraffin-embedded human Cervical Carcinoma stained with Cytokeratin 5 Mouse Monoclonal Antibody (KRT5/3594).

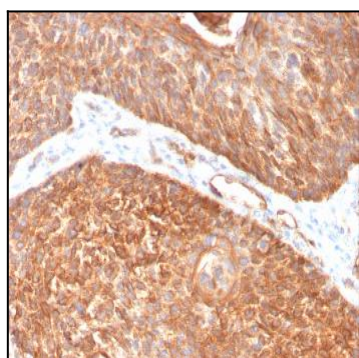


Fig. 4: Formalin-fixed, paraffin-embedded human Pancreas stained with Cytokeratin 5 Mouse Monoclonal Antibody (KRT5/3594).

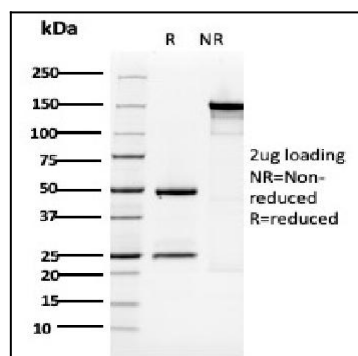


Fig. 5: SDS-PAGE Analysis Purified Cytokeratin 5 Mouse Monoclonal Antibody (KRT5/3594). Confirmation of Purity and Integrity of Antibody